



**Adam Tas Corridor Energy**

# **Voltage switchgear small busbar**





## Overview

---

Discover the unique characteristics and advantages of Low Voltage Bus Bars for Switchgear Optimized for low voltage applications. In low-voltage power distribution, the cabinet is never just a cabinet, and the busbar is never just a strip of copper. A busbar is defined as an electrically conductive strip or bar used to distribute power to multiple circuits in parallel.



## Voltage switchgear small busbar

---

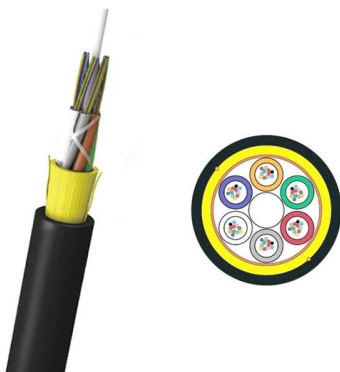


### How to Choose a Protection Current Transformer for Switchgear?

HPT protective current transformers for low-voltage switchgear, MCC, and busbar protection systems. Reliable relay protection, high short-circuit withstand, and compact installation design.

### Indoor metal-clad withdrawable Medium Voltage switchgear 12kV

Indoor metal-clad withdrawable medium voltage switchgear is designed for 3.6-40.5kV, 3-phase AC 50/60Hz single-bus and single-bus sectionalized power systems as a complete power distribution



### Everything You Need to Know About High Voltage

Discover everything about high voltage switchgear, including its functions, components, types, applications, and maintenance. Learn how to

### Electrical Busbars: Function, Types, Design & Selection

Electrical busbars are solid conductors used to carry and distribute high current in switchgear,



panels, substations, and power systems. This guide



### Busbar Design in Switchgear: Key Principles & Best Practices

Looking for a safe, efficient, and standards-compliant busbar solution for your switchgear project? Our engineering team



### Low Voltage Switchgear Design for US and EU Markets: Busbar

Low Voltage Switchgear Design: How Better Busbar Systems and Smarter Current Ratings Improve Reliability In low-voltage power distribution, the cabinet is never just a cabinet, and



### 12kV XGN15-12 Metal Clad MV Medium Voltage Switchgear SF6

12kV XGN15-12 Metal Clad MV Medium Voltage Switchgear SF6 630A-1250A/PT Section Description: 11kV switchgear is the latest generation of indoor complete power distribution equipment with three



## Low Voltage Bus Bars for Switchgear: Tailored Electrical Conduits for

Low Voltage Bus Bars for Switchgear play a pivotal role in efficient power distribution within electrical systems. By offering customized solutions designed for compatibility, safety, and optimal



## Major components you can spot while looking at

I'm highly specialized in the design of LV/MV switchgear and low-voltage, high-power busbar trunking (<6300A) in substations, commercial

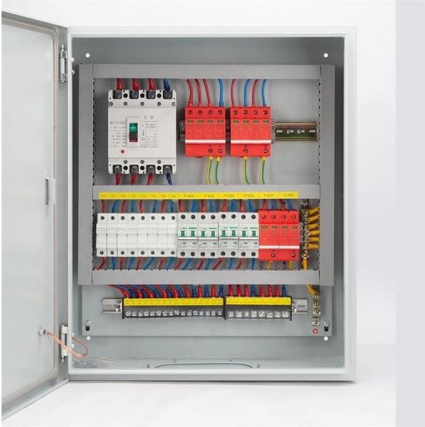
## Low Voltage Bus Bars for Switchgear

How do I select the right bus bar for my switchgear? Consider your voltage, current requirements, and physical constraints. We can help with the selection process.



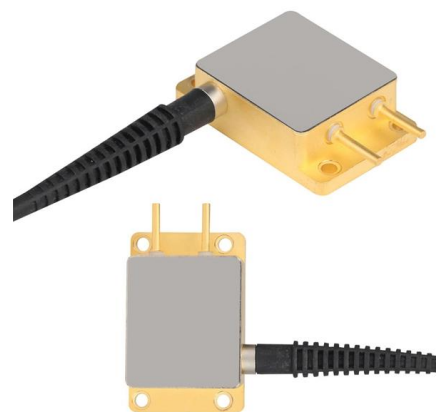
## Medium Voltage Switchgear

ABB's medium voltage switchgear (1 kV to 52 kV according to the IEC standards) are designed to connect and protect an evolving grid.



## Bus Bar Design for an Electrical Switchboards

In summary, the bus bar is the backbone of the switchboard--its design directly impacts reliability, safety, and performance of the entire system. With this understanding, let us now look at



## Switchgear Busbar Sizing Guide: Current, Temperature Rise, and

AI Snapshot switchgear busbar sizing decisions should start from voltage class, fault level, and installation environment. Protection, interlocks, and maintenance access are often as

## Preparing for 800 VDC Data Centers: ABB, Eaton

How ABB Is Supporting the Move to 800-V DC Data Centers ABB says its joint work with NVIDIA will focus on advanced power solutions to enable 800-V DC





可选配件



## IEC 61439 Busbar Standard: A Guide to Low-Voltage

The IEC 61439 standard applies to busbars, especially when they are part of low-voltage switchgear and control gear assemblies, e.g., power

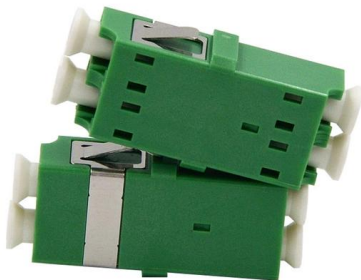
## How Can Low Voltage Switchgear Make Power Distribution Safer and

Low Voltage Switchgear is often treated as a basic electrical cabinet, but for buyers, engineers, contractors, and facility managers, it can decide whether a power distribution system



## Low Voltage Bus Bars for Switchgear

Low Voltage Switchgear bus bar for panelboards, switchboards, switchgear, splitters, and all other electrical enclosures and cabinets.



## Bus Bar Arrangement in Power Station:

Bus Bar Arrangement in Power Station:When a number of generators or feeders operating at the same voltage have to be directly connected electrically, bus-bars



### Busbar Insulator UL-Certified Resin Stand-Off Support for Electrical

Made from UL-rated epoxy or composite resin, this insulator withstands high voltage, heat, and mechanical stress. Its stand-off design maintains a precise dielectric spacing, reducing risk of arcing,



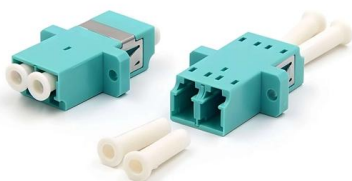
### Switchgear Busbar Sizing Guide: Current, Temperature Rise, and

Switchgear Busbar Design switchgear busbar sizing busbar current rating temperature rise switchgear short time withstand IEC 62271 IEC 61439 IEC 60076 Power distribution FAQ What



### Busbar Design for LV Panels: What Most Engineers Get Wrong

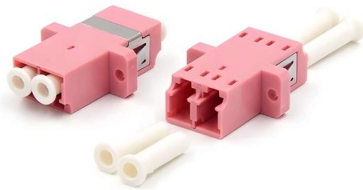
Copper Busbars Copper busbars remain the default for most copper busbar switchgear designs because they combine high conductivity, strong mechanical behavior, good corrosion





## Used Low Voltage Switchgear-High Voltage & DC Electric Motor

Used low voltage switchgear, as MNS 400v switchgear, is suitable for systems with AC 50~60Hz and rated operation voltage of 660V and below. It is used for the control of power generation,

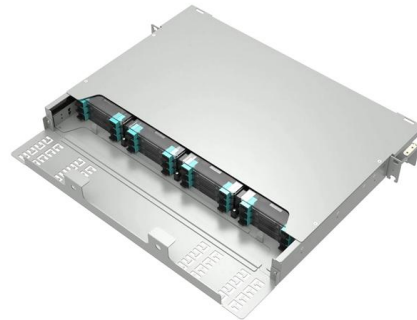


## U.S. Low-Voltage Switchgear Types Explained: UL

Understand the four core U.S. low-voltage switchgear types--Switchgear, Switchboard, Panelboard, and MCC--their UL/IEEE

## Busbar

The use of busbar for switchgear goes back to the dawn of electricity generation and is very common in both residential load centers of 200A and less and in industrial motor control center (MCC)



## EMS , ? Individual Busbars for Switchgear

Special busbar systems for all electrical connections in switchgear, control cabinets and low-voltage systems.



## Contact Us

---

For datasheets, pricing, or custom telecom energy solutions, please visit:  
<https://www.koskolong.co.za>