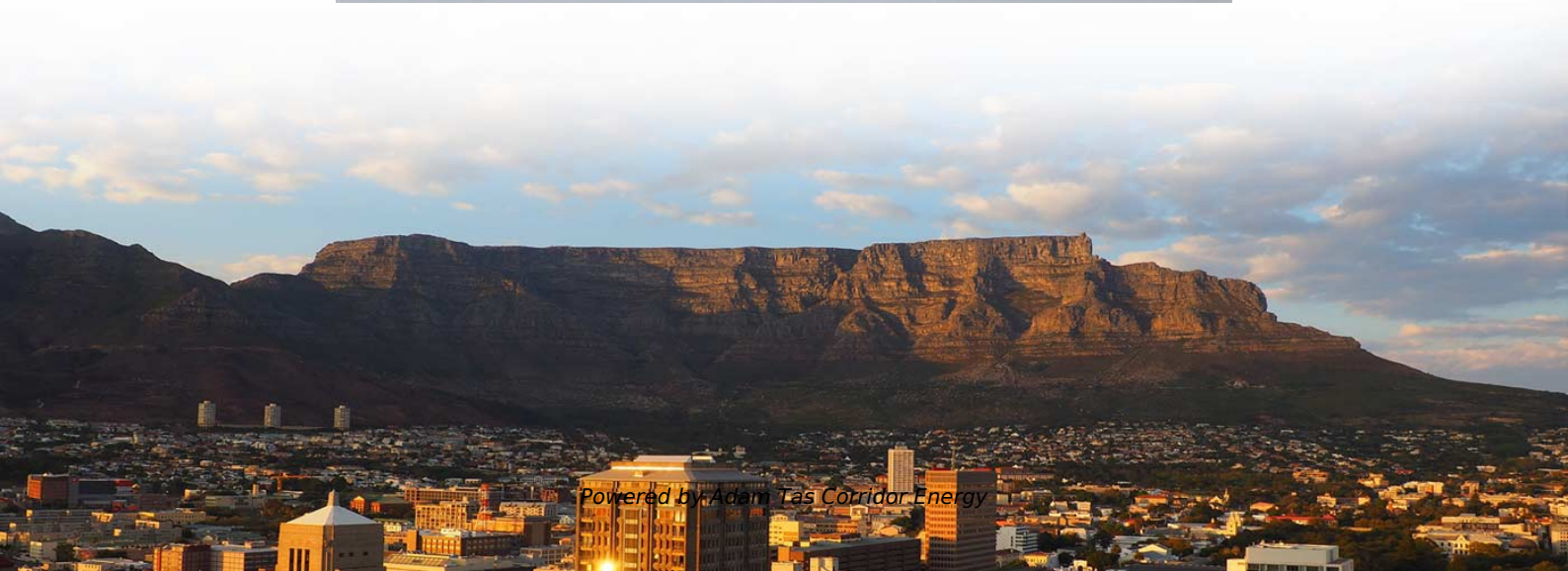




Adam Tas Corridor Energy

Welding Methods for Galvanized Cable Trays





Welding Methods for Galvanized Cable Trays



GUIDE CABLE TRAYS TECHNICAL

NEMA VE 1-2017 Specifies requirements for metal cable trays and associated fittings designed for use in accordance with the rules of Canadian Electrical Code, Part I and the National Electrical Code®

Proper Galvanization In Cable Tray Manufacturing and

The light, heavy and aggravating type. Proper Galvanization of Cable Tray A cable tray manufacturer will undertake the method of galvanizing the cable



Cable Tray Fabrication Method Statement

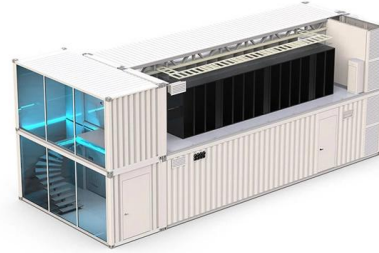
It includes sections on scope of work, reference documents, required materials and equipment, safety considerations, and work sequence. The work sequence

Cable Tray Fabrication Method Statement

METHOD OF STATEMENT Cable tray fabrication and installation - Free download as Word Doc



(.doc), PDF File (.pdf), Text File (.txt) or read online for free. The



Why Galvanized Cable Tray is the Best Option for

Discover why galvanized cable trays are ideal for industrial use, focusing on corrosion resistance, types, and key benefits.

Cable Trays Surface Treatment: Methods and Applications

Explore the ultimate guide to cable trays surface treatment, covering galvanization, HDG, painting, powder coating, anodizing, and more.



Why Galvanized Steel Cable Trays Are Ideal for

Why galvanized steel cable trays for industrial cable management? Durable, corrosion-resistant, and cost-effective for harsh conditions.



cable tray system

Straight sections of solid bottom cable trays constructed from single sheet of metal, providing excellent protection from external damage. They are used primarily for intrumental control,



Cable Tray Installation Procedure , PDF , Metal

Method Statement for Cable Tray Installation - Free download as Word Doc (.doc), PDF File (.pdf), Text File (.txt) or read online for free. This document outlines the

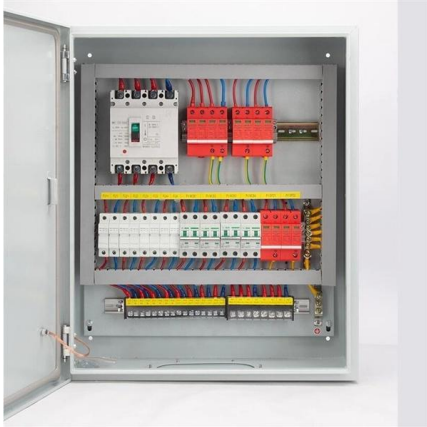
GI Cable Trays - What it is, Types and Applications

GI cable tray systems take care of this efficiently. A GI cable tray (Galvanized Iron Cable Tray) is a structural system that protects, routes, and supports electric wires and cables in industrial,



Cable Tray Systems: Requirements and Best Practices

Comprehensive guide to cable tray systems requirements: tray types, materials, loading, supports, bonding, routing, and best practices for safe electrical cable management.



Technical Specification for Cable tray installation and cable laying work

Approval of IPR shall be obtained for site preparation and marking the cable tray routes and locations of cable tray support before proceeding with the erection and installation work.

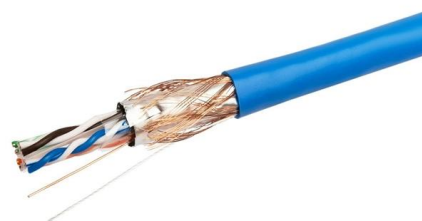


Cable Tray Technical Guide A practical guide to product selection and

The choice of method should be discussed with a local inspector. The best decision may be to extend only the cables, creating a discontinuity in the cable tray.

How to Choose Galvanized Cable Tray You need to know

Learn how to choose the right galvanized cable tray for safe, efficient cable management: compliance, load capacity, and installation tips.





Cable Tray Specifications and Guidelines

This document provides general guidelines for cable trays and their installation. It discusses the different types of cable trays, including perforated

Installation of Cable Tray, Trunking And Accessories

2. Purpose This method statement for the Installation of Cable Tray, Trunking, and Accessories shows and explains the procedure must be followed to install the cable tray and



Best Practice Guide to Cable Ladder and Cable Tray Systems

This guide covers cable ladder systems, cable tray systems, channel support systems and associated supports intended for the support and accommodation of cables and possibly other electrical

Raja Ramanna Centre for Advanced Technology

4.1 Ladder type cable trays shall be fabricated as per drawing No. RRCAT/ ACCEL/PCD/M457. The trays shall be shop fabricated and the fabrication process shall include pressing, punching, slotting,



Cable tray support and its welding method

As described above, the cable tray support and the welding method according to an embodiment of the present invention can weld the welding area by the operator alone while the joint surface formed at



Cable tray support and its welding method

Referring to FIG. 1, a cable tray support welding method according to an embodiment of the present invention includes a welding position determining step (S100), a temporary attaching



12-SDMS-06

Cable tray sections, fittings and connected raceways shall be bonded properly using bonding jumper at both ends. The bonding jumper shall be bare copper conductor of 50 mm² size and 400 mm long.





Bharat Heavy Electricals Limited

1.1 This specification covers the design, manufacture, inspection & testing, packing at manufacturer's works and delivery to site of galvanised mild steel structural members to be used for cable tray



16115 Cable Tray

Install all open cable tray in an accessible location, visible from the floor, with minimum length hanger rods to avoid tray tilting under asymmetric loads. If tray tilts at any location, provide 1-1/2 inch pipe in

Technical Specification for Cable tray installation and cable laying work

1. Scope :- This specification covers the following major activities; - Fabrication and installation of Mild Steel (MS) support structure for Galvanized Iron (GI) Cable tray. - Installation of perforated GI Cable



Mastering Cable Tray Welding: Tips for Seamless Installations

Advanced techniques like pulse welding are proven to increase the lifespan of cable tray systems by up to 40%. Multi-pass welding significantly reduces the risk of weld failure in heavy-duty industrial projects.



Utility Cable Support Welding Guide

Welding Metal Supports for Utility Cables: A Comprehensive Guide In the ever-evolving world of utilities system construction, welding plays a crucial and multifaceted role. From ensuring structural integrity



Best Practice Guide to Cable Ladder and Cable Tray Systems

This publication is intended as a practical guide for the proper and safe* installation of cable ladder systems, cable tray systems, channel support systems and associated supports.

Contact Us

For datasheets, pricing, or custom telecom energy solutions, please visit:
<https://www.koskolong.co.za>