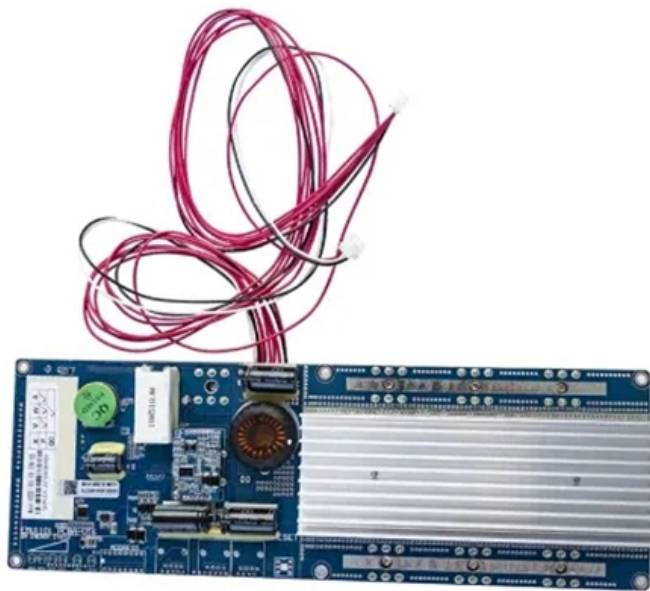




Adam Tas Corridor Energy

What are the common causes of beam splitter malfunctions





Overview

A beam splitter or beamsplitter is an that splits a beam of into a transmitted and a reflected beam. It is a crucial part of many optical experimental and measurement systems, such as, also finding widespread application in. Main causes include dust contamination of optical ports exposed to the environment, secondary pollution to transceiver ports from pre-contaminated fiber connector end faces, scratched end faces caused by improper handling of pigtail fiber connectors, and poor port contact plus. My light source is beamed onto a 50/50 beam splitter behind which sits my camera but I cannot seems to eliminate ghosting from the surface of the beamsplitter.



What are the common causes of beam splitter malfunctions



What Is a Beam Splitter and How Does It Work?

Quantum Optics: Beam splitters are used to manipulate single photons, forming the basis for experiments in quantum entanglement and quantum computing. Holography: The beam splitter

What are Beamsplitters?

Types of Beamsplitters Standard Beamsplitters are commonly used with unpolarized light sources, such as natural or polychromatic, in applications where polarization state is not important. They are



AshwinD24's gists · GitHub

GitHub Gist: star and fork AshwinD24's gists by creating an account on GitHub.

The Common Issues of Optical Transceivers and How to Diagnose

Learn the most common optical transceivers



issues and practical diagnosis methods to easily troubleshoot optical link faults.



Problem with Beam Splitter Refraction

I made a beam splitter for a simple test, as shown in the images below: This was my expected ray trace: But it instead refracted light like this: Why did the splitter

Common Splitter Failures: Optical and Structural Causes

Splitter failures occur primarily due to mechanical stress and environmental influence, not spontaneous optical breakdown. When splitter modules are mounted without adequate strain relief,



Beam Splitters - optical power splitter, beamsplitter, thin

Beam splitters are devices for splitting a laser beam into two or more beams. There are different types, including polarizing and non-polarizing versions.



Log Splitter Common Problems - Troubleshooting & Maintenance

Engine Troubles: Diagnosing Power Unit Malfunctions For gasoline-powered log splitters, the engine is the driving force. Many log splitter common problems stem from engine issues, similar



How Does a Beam Splitter Work?

Common Beam Splitter Designs Plate beam splitters consist of a thin, flat piece of glass with a specialized optical coating on one surface. This coated surface partially reflects light, while the

Common Log Splitter Problems and How to Fix Them

Here's a guide to the most common log splitter problems and how to fix them-- plus, we've included a curated list of top-rated tools and replacement parts to help you get the job done faster and more



Speeco Wood Splitter 22 Ton: Common Problems (5)

Discover common Speeco Wood Splitter 22 Ton problems and get 5 expert tips to fix them fast. Keep your splitter running smoothly with our guide!

How Beamsplitters Work: Principles and Applications

While plates are lightweight and introduce minimal optical path length, the substrate thickness can cause a slight lateral shift in the transmitted beam and potentially introduce "ghosting"



Log Splitter Troubleshooting Control Valve Malfunctions

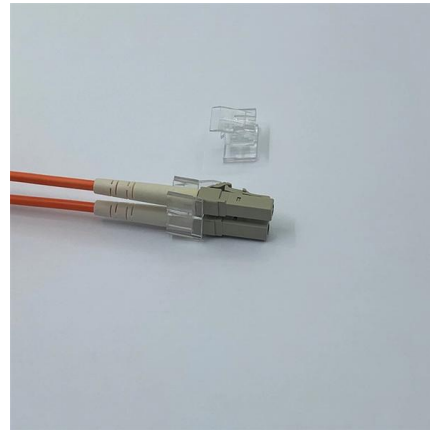
Have you ever experienced issues with the control valve on your log splitter? Control valve malfunctions can be frustrating and can prevent you from efficiently splitting logs. In this article, we will explore



Beam splitter

Overview Designs Phase shift Classical lossless beam splitter Use in experiments Quantum mechanical description Reflection beam splitters

A beam splitter or beamsplitter is an optical device that splits a beam of light into a transmitted and a reflected beam. It is a crucial part of many optical experimental and measurement systems, such as interferometers, also finding widespread application in fibre optic telecommunications.



Scattering Characteristics of Various Nodular Defects in a Dichroic

The possible reasons for the presence of these pits are briefly discussed, and the directions for further research are provided at the end of this Letter.

optics

My light source is beamed onto a 50/50 beam splitter behind which sits my camera but I cannot seem to eliminate ghosting from the surface of the



Question on Ghosting and Wedge Beamsplitters : r/Optics

In my case I needed a plate BS in a weakly converging beam. Adjust the wedge so that the ghost is "thrown" just off the camera. By adjusting the wedge and the thickness, you can



also correct for the



Troubleshooting Optical Splitters , ICT Solutions & Education

Most failures tend to be in the OSP, and are caused by improper installations which can be caused by microbends, splices, connector damage, and improper fiber management. Splitter failures can also



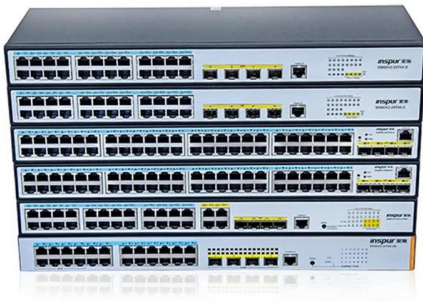
Beam Splitting

Beam splitting is defined as the process of dividing an incident light beam into two or more separate beams, which can be achieved through various structures, including metasurfaces that utilize phase

What Is a Beam Splitter? Types, Uses, and How It Works

Learn how beam splitters divide light into separate paths, the main types available, and where they're used in optics and scientific instruments.





Beamsplitters

Beam Splitter Gratings Multiple beamsplitters, also known as array illuminators, are gratings with sophisticated periodic structure that are capable of transforming an incident plane wave into a set of

Beam Splitters: Types, Applications, and Selection

Beam splitters are an essential component in modern optics. They play a critical role in many fields, including scientific research, medical imaging,



How Beamsplitters Work: Types, Mechanisms, and

This article explains the working principles of beamsplitters, detailing how they divide a beam of light into two separate paths, the different types of

Troubleshooting Optical Splitters , ICT Solutions & Education

Optical splitters in the outside plant (OSP) are used mostly in passive optical networks (PONs) for fiber-to-the-user (FTTx) networks, and are often overlooked as failure points. In this article I focus on a



Common Malfunctions and Solutions in Separator, Filter,

Common separator, filter, and compressor malfunctions with expert maintenance solutions. OEM spare parts from Maridec Marine ensure lasting performance.



Why doesn't a typical beam splitter cause a photon to decohere?

Experimentally, in a Mach-Zender interferometer we can fold light paths with a mirror while maintaining coherent interference, but passing either beam into the photocathode of a photodetector destroys



How to Select a Beamsplitter

Beamsplitters are used in laser systems, optical interferometry, fluorescence, and biomedical instrumentation. They come in three basic forms: plate, pellicle, and cube. All are made using a





Transmission and Reflection by Beamsplitters

One of the most serious consequences of using dielectric coatings for beamsplitter fabrication is the unequal transmission and reflection for p and s (parallel and



Contact Us

For datasheets, pricing, or custom telecom energy solutions, please visit:
<https://www.koskolong.co.za>