



**Adam Tas Corridor Energy**

# **What are the reasons for optical module LOS alarms**





## Overview

---

If the received power level is below the sensitivity threshold, the module declares LOS. Optical transceivers are essential components in modern fiber-optic networks, enabling high-speed data transmission across data centers, telecom systems, industrial automation, and enterprise switching environments. It is easily confirmed that the key alarm is the R-LOS alarm reported by the SC 1 in station B. These alarms are categorized based on layers (OTU, ODU, and client signals) and types of failures.



## What are the reasons for optical module LOS alarms

---

### Analysis of the Alarms Caused by the R\_LOS Alarm of the SC1 Board



The optical port of the OSC board connecting to the TM port of the FIU board reports the OTS\_LOS-O alarm because the R-LOS alarm is detected. 4. It is confirmed that the physical fiber

### What are the Common Client Level Alarms on Optical

What causes client level alarms on optical devices? Client level alarms can be caused by fiber optic cable issues, connector problems, power



### Optical module LOS alarm method and system

In a word, the existing optical module has the defect of no trigger when the LOS alarm is realized by using the LOS judgment signal of the CDR chip, so that the reliability of the alarm

### Alarm Troubleshooting

Alarm Troubleshooting Note Certain software releases have reached end-of-life status. For more information, see the End-of-Life and End-of-



Sale Notices. This chapter gives a description,



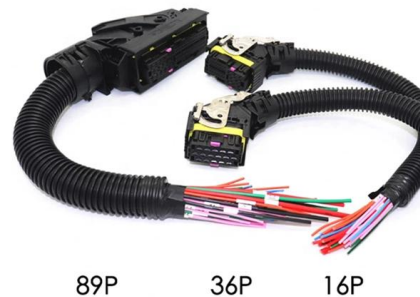
### Optical Modules Fail to Communicate

If neither transmit nor receive power alarms are displayed on the two ends but the two interfaces are still down, collect detailed information and logs about the optical modules, and then



### What Are TX Fault and RX LOS in Optical Transceivers?

One of the most common reasons for LOS alarms. If the received power level is below the sensitivity threshold, the module declares LOS. Even



### Troubleshooting Physical Layer Alarms on SONET and SDH Links

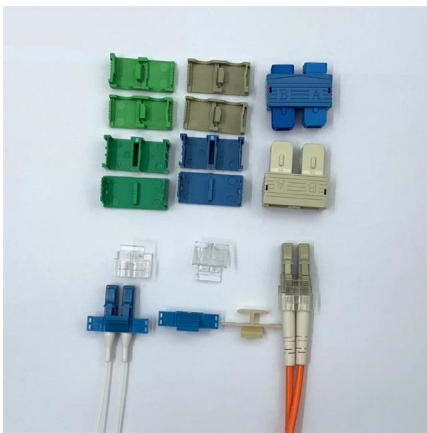
Alarms at SONET's Layers SONET equipment detects events and alarms at each of SONET's three layers -- section, line and path. Typically, a SONET device sends alarms both





## OTN related alarms

Here are some common OTN-related alarms:  
### \*\*1. Loss of Signal (LOS)\*\* - Triggered when there is a complete loss of optical signal. - Possible causes: Fiber cut, transmitter failure, or



## Troubleshooting Guide for Cisco NCS 1001, IOS XR Releases 7.x.x,

The Equipment Failure alarms is raised on an optical module equipment that has an internal failure or is not able to communicate with the NCS1001 chassis. Clear the EQPT-FAIL- Alarm

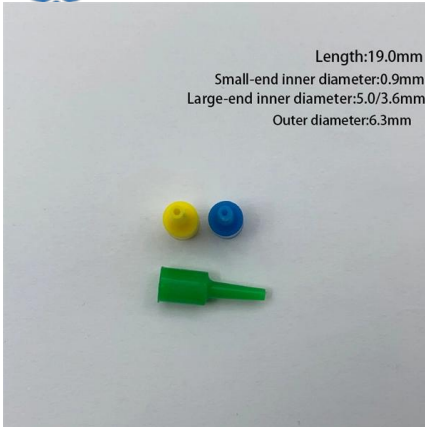
## Understanding common OTN alarms: LOS, LOF, LOM

Common Critical Alarms in OTN (Optical Transport Network) \*\*1. Loss of Signal (LOS)\*\* - Triggered when there is a complete loss of optical signal. - Possible causes: Fiber cut, transmitter failure



## What Are TX Fault and RX LOS in Optical Transceivers?

Optical transceivers are essential components in modern fiber-optic networks, enabling high-speed data transmission across data centers, telecom



## Checking Whether the POWER\_DIFF\_OVER, R\_LOS, or MUT\_LOS Alarm

Procedure If the R\_LOS or MUT\_LOS alarm is reported, rectify the optical power loss fault first. If the POWER\_DIFF\_OVER alarm is reported, check the configuration of the OLP board corresponding to



## Analysis of the Alarms Caused by the R\_LOS Alarm of the SC1 Board

The OTS\_LOS-O alarm indicates loss of the monitoring signal (overhead) in the OTS layer. The optical port of the OSC board connecting to the TM port of the FIU board reports the

## How to Diagnose Optical Module Failures

Learn to diagnose optical module failures with 2 critical commands. Fix LOS alarms, interpret TX/RX power thresholds, prevent signal loss or module damage. Professional tips from





## Cisco NCS 2000 Series SVO Troubleshooting Guide, Release 12.1

An LOS, LOS-P, or OPWR-LFAIL alarm on a circuit causes multiple alarms for each channel. Correlation simplifies troubleshooting by reporting a single alarm for multiple alarms having

### Understanding common OTN alarms: LOS, LOF, LOM

Common Critical Alarms in OTN (Optical Transport Network) \*\*1. Loss of Signal (LOS)\*\* - Triggered when there is a complete loss of optical signal.



### What Is The Relationship Between The LOF And LOS Alarms?

If an optical fiber is removed, LOF may be generated first and then LOS, which is related to the alarm detection mechanism. The LOSi, LOFi, and LCDGi alarms are detected in the time

### OTN related alarms

In OTN (Optical Transport Network) technology, several alarms and indicators are used to monitor and troubleshoot network performance. Here are some common OTN-related alarms:



## Alarms Troubleshooting Guide for Cisco NCS 4000 Series

This chapter gives a description, severity, and troubleshooting procedure for each commonly encountered NCS 4000 alarm and condition. Sections Critical Alarms through NA



### Alarm Troubleshooting

The RX Loss Of Continuity (LOC) alarm is raised when there is an optical power failure on the port receiving from a span. This alarm represents a fiber cut on the span and is a combination



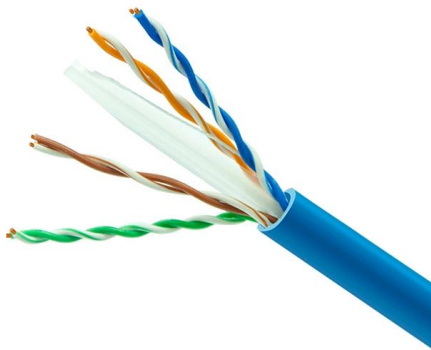
### Optical Module Troubleshooting

To ensure normal communication between two optical interfaces, check for transmit and receive power alarms after the two interfaces have optical modules installed and connected using optical fibers.



## Troubleshooting Guide for Cisco NCS 1002, IOS XR Releases 6.3.x,

DGD Alarm Default Severity: Minor (MN), Non-Service-Affecting (NSA) Logical Objects: TRUNK  
The Differential Group Delay (DGD) alarm is raised on the NCS 1002 when the value of the



## Diagnosing and Solving Common Optical Transceiver Failures

In this article, we discuss the main reasons and solutions for optical transceiver connection failures, which may help you with diagnosing common module issues.

## Services Are Abnormal Because IPA Detection Threshold Is

1. The LOS threshold of the detection board of the Raman IPA is too high (-20 dBm). As a result, when the line insertion loss jitter is 1 dB, the receive optical power of the detection board



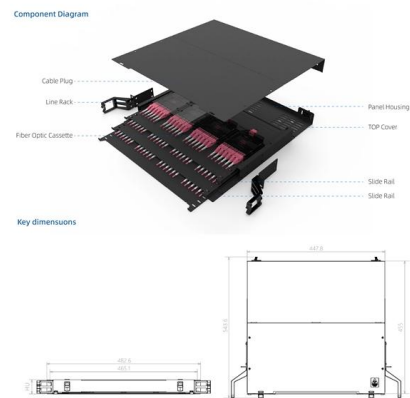
## Optical Module Common Failure Of Optical Power

This paper introduces the common failure causes of abnormal transmit/receive optical power of optical modules and proposes countermeasures to help users



## Alarms in OTN system and explanations

Optical Transport Network (OTN) systems have several alarms to monitor network health and detect issues that could impact performance. These alarms are categorized based on layers



## Common OTN Alarms and their Troubleshooting Steps

An OTN (Optical Transport Network) alarm is a notification mechanism that indicates the occurrence of an error, defect, or anomaly in the optical network infrastructure.

## Contact Us

For datasheets, pricing, or custom telecom energy solutions, please visit:  
<https://www.koskolong.co.za>