



Adam Tas Corridor Energy

What are the requirements for large spans of cable trays





Overview

For ladder cable trays supporting large power cables, 9-inch or wider rung spacings should be selected. Maintain spacing or to keep cables in place when the tray is set the minimum bend radius for cables as they exit the bottom of the cable tray. A rung spacing of 6 to 9 inches (150 to 230 mm) is preferable when the cable tray is used for instrumentation and control applications that require. The mechanical and electrical characteristics, tests, certifications, overall quality management, recommendations mentioned in this technical guide only apply to our own cable management ranges and cannot under any circumstances be transposed to silicone, overheating or. In practice, cable tray dimensions are a system of interrelated measurements—width, depth, length, and material thickness—that directly affect cable fill compliance, heat dissipation, structural loading, and long-term expandability. Proper installation can significantly reduce electromagnetic interference, prevent fire hazards, and improve overall efficiency.



What are the requirements for large spans of cable trays



Large Span Cable Trays Lay Heavy Cables in Industries

Large span cable trays can be divided into ladder style, channel style, perforated style with galvanized, powder coated surface to resist corrosion. They are widely

Polymer Cable Trays Types: Your Guide to Choosing Right

Explore different Polymer Cable Trays Types. We break down solid, hollow, and steel-lined options for your cable management needs. Find the best fit.



Top 5 Cable Tray Manufacturers in North America

Find the leading cable tray manufacturers in North America, with insights into top companies, compliance standards, and essential factors for choosing the right

Cable Tray Technical Guide A practical guide to product selection and

Cable tray length is selected based on the load



to be supported, the distance between the supports (also referred to as the span), and handling and installation constraints.



Cable Tray Price List Philippines Updated 2026

Where can cable tray be used? Cable trays are primarily used in areas with a large number of small cables. What is the function of a cable ladder? Cable

Cable Tray Size Calculation for Project Engineers

Cable trays are essential for organizing and supporting electrical and communication cables, as well as assuring safe installations. Choosing the



CABLE TRAY SYSTEMS GUIDE

With a support span of 20' and a total working load of 80 lbs/ft, a NEMA Class 20B tray rated at 75 lbs/ft will not be adequate. A NEMA Class 20C tray, rated at 100 lbs/ft, will be required.





A Guide to Installing and Supporting Electrical Cable Trays

A professional guide to installing electrical cable tray systems per NEC Article 392. Covers support, securing cables, and fill calculations.



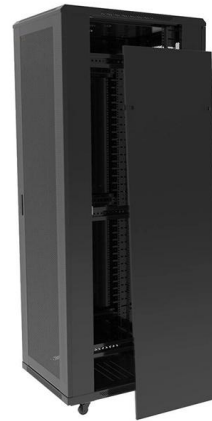
GUIDE CABLE TRAYS TECHNICAL

Specifies requirements for metal cable trays and associated fittings designed for use in accordance with the rules of Canadian Electrical Code, Part I and the National Electrical Code®



Cable Tray Roll Forming Machine

Roll Forming Systems for Cable Trays A cable tray system used to support insulated electrical cables used for power distribution control and communication as an



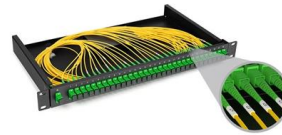
FRP Cable Tray: Benefits, Uses, and Buying Tips

Learn how to choose the right FRP cable tray for industrial projects, with tips on load, corrosion resistance, customization, and long-term value.



Cable Tray Dimensions Guide: Standard Sizes, Tray

Explore standard sizes by tray type, understand width and depth limits, and see how to calculate and choose compliant cable tray sizes for real projects.



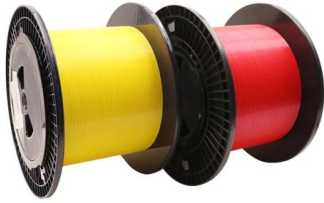
Cable Tray Manufacturers Industry Guide , Roll Forming Knowledge

Explore the global cable tray manufacturing industry including systems, market demand, regions, and roll forming machines used worldwide.

Industrial Cable Tray Manufacturer & Supplier in India

High-load galvanized perforated & ladder cable trays. Leading industrial cable tray manufacturer & supplier in India. Custom sizes, full accessories, quick installation.





Cable Trays

Types of a Cable Tray : 1- Ladder Cable Tray: Ideal for heavy-duty power distribution, these trays offer superior strength and support for large cables. 2-

cable tray Manufacturer/Producer , B2B companies and suppliers

416 suppliers for cable tray
Manufacturer/Producer Find wholesalers and contact them directly B2B marketplace Find companies now!



Cable Tray Spacing Standards for Installation and Safety

Discover the essential cable tray spacing requirements for safe and efficient installation. Learn key standards, horizontal and vertical spacing, and more.



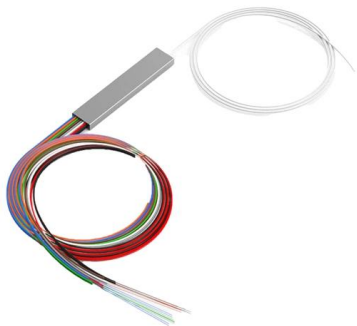
Cable Tray Systems: Requirements and Best Practices

This article explains the main requirements and good practices for cable tray systems, including tray types, materials, loading, supports, bonding, cable selection, and installation details.



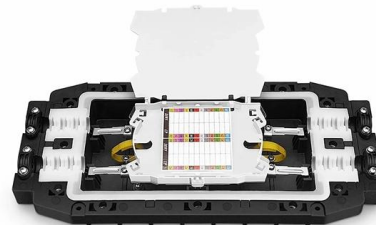
Buy China Wholesale Manufacturer Wholesale Price

Get manufacturer wholesale price large- span hot-dipped galvanized ladder cable tray \$1.5 at wholesale discount prices from a reliable verified supplier, Liaocheng



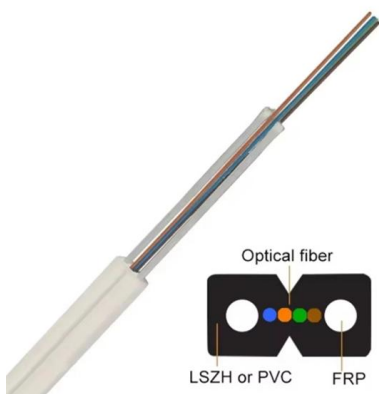
Cable Tray SHIB NAL

Cable trays are not raceways, but they are treated as a structural component of a facility's electrical system. Cable trays are a part of a planned cable management system to support, route, protect and



Cable Tray Support Spacing: Key Guidelines Explained

Explore the essential cable tray support spacing requirements for safe and efficient installations. Learn NEC guidelines for perforated, ladder, and wire





Best Practice Guide to Cable Ladder and Cable Tray Systems

This publication is intended as a practical guide for the proper and safe* installation of cable ladder systems, cable tray systems, channel support systems and associated supports.

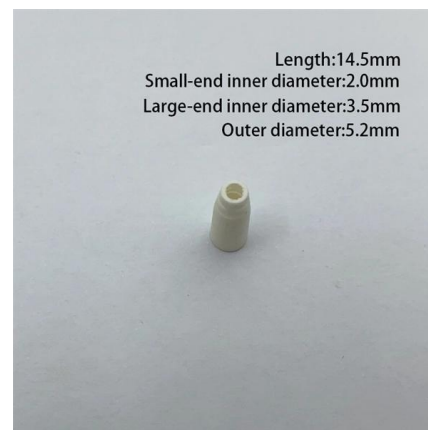


A Guide to Cable Tray Accessories and Their Functions

Explore a detailed guide to cable tray accessories and understand their uses in ensuring safety, stability, and efficiency in electrical system

Cable Tray Systems Explained: The Right Solution for

Cable tray systems have become one of the most widely used solutions for managing large volumes of cable efficiently. In this guide, we explain what cable



How to Fix Common Cable Management Issues using

Discover common cable management problems and how cable tray accessories effectively solve them to ensure safety and performance.



B-Line series Cable Tray Design Considerations

For ladder or ventilated trough trays, the diameter of all cables 4/0 and larger must be added together, and the total must not exceed the inside width of the cable tray.



Cable Tray Systems: Requirements and Best Practices

Cable tray systems offer a flexible and efficient solution for supporting large numbers of cables in modern electrical installations. When correctly designed and installed, they improve cable

Codes and Standards , Cable Tray Institute

Covers construction and test requirements for continuous, complete nonmetallic systems of ladder, ventilated, solid bottom cable trays, or channel type trays, intended for the support of power or





Contact Us

For datasheets, pricing, or custom telecom energy solutions, please visit:
<https://www.koskolong.co.za>