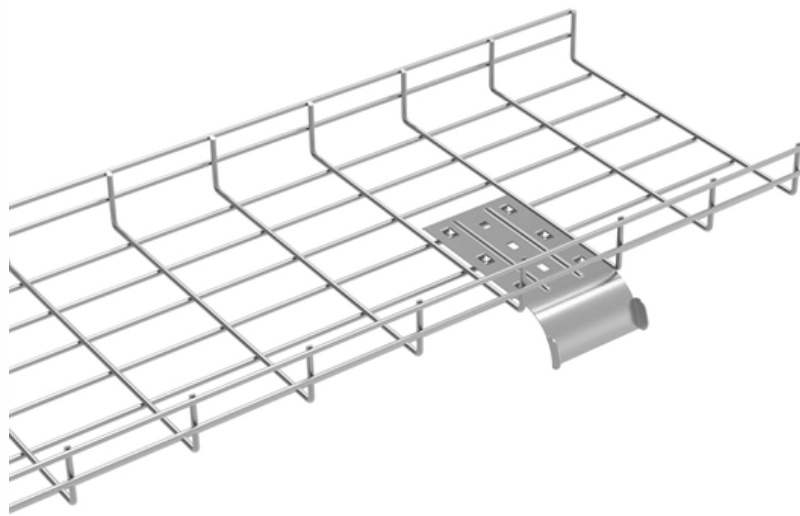




Adam Tas Corridor Energy

What can be used without a beam splitter





Overview

A beam splitter or beamsplitter is an that splits a beam of into a transmitted and a reflected beam. It is a crucial part of many optical experimental and measurement systems, such as, also finding widespread application in.



What can be used without a beam splitter

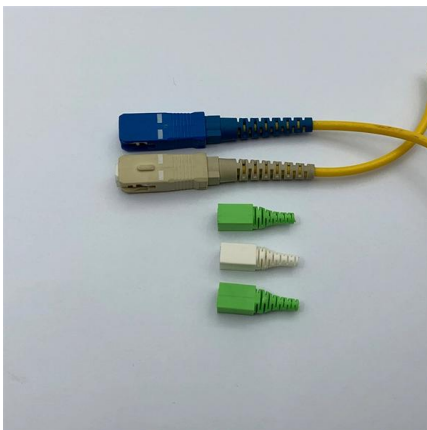


Beamsplitters Selection Guide For Optical Applications

In form factor these are very similar to plate beamsplitters. Applications of Beam Splitters One of the biggest application areas is interferometry. This is

Beam splitter , Description, Example & Application

One beam is reflected off a mirror and back to the beam splitter, while the other beam is transmitted through a sample or the environment being measured. The two beams are then



Polarizers - absorptive, polarizing beam splitters,

The reason for the use of many different designs of birefringent polarizers is that different applications can have quite different requirements on the polarizers, and

Photonics 101

Usually, a non-polarizing beam splitter will split the beam on a 50/50 ratio while a polarizing beam splitter tends to lean towards a 95/5 ratio.



Other than the cube beam splitter, there is



Beam Splitters & Their Applications: Your Ultimate Guide

A beam splitter is an instrument that splits a light beam into two or more beams. In this blog post, we will discuss about beam splitters and their



Beam Splitters - optical power splitter, beamsplitter, thin-film

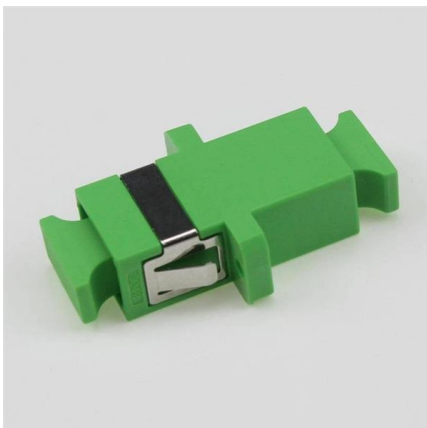
A beam splitter is an optical component used for splitting light into two separate beams, usually by wavelength or polarity. It can also be used, in reverse, as a beam combiner, to join two light beams



WebiTelecomms Cabling

What Is a Beam Splitter? Types, Uses, and How It Works

A beam splitter is an optical device that takes a single beam of light and divides it into two separate beams. One portion passes through the device while the other reflects off it, and the ratio between





What Are Optical Beam Splitters?

In real-world applications, they can be found in fiber optic telecommunications. This means that your high-speed internet connection might not function efficiently



Beamsplitters: Combining/Separating Light Wavelengths

Non-Polarizing Beamsplitters: Non-polarizing beamsplitters are also known as cube beamsplitters, and consist of two cubes joined together in a 45°

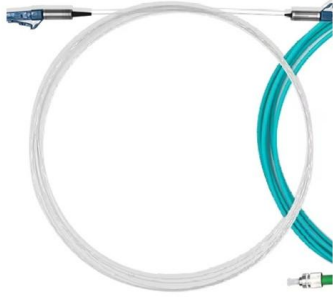
What is a Beam Splitter?

There are different types of beam splitters; the most important are plate and cube beam splitters as shown in the figure below. Beam splitters are required for various interferometers,



Transmission and Reflection by Beamsplitters

Transmission and Reflection by Beamsplitters - Java Tutorial A beamsplitter is a common optical component that partially transmits and partially reflects an



Polarizing vs. Non-Polarizing Cube Beam Splitters: Choosing the

Compare polarizing vs non-polarizing cube beam splitters and learn how each type works, key differences, and the best applications for your optical setup.



Understanding Beamsplitters: Types, Principles, and

Then, interference patterns created by the combined beam and reflected light can be used to calculate distance. Lasers Beamsplitters are

What Are Optical Beamsplitters? , Plate, Cube & Dichroic Types

In Summary Optical beam splitters are versatile devices, typically made of glass, used in separating or combining light beams. These optical components play a major role in the science and tech industry.

LoRawan outdoor base station





All You Need to Know About Beam Splitters

Explore the types, workings, and uses of beam splitters in high-tech devices.

Beamsplitters: Combining/Separating Light Wavelengths

Beamsplitters are use a combination of refraction and reflection to alter the direction of the light beam, allowing various wavelengths to be redirected.



How Beamsplitters Work: Types, Mechanisms, and

A cube beam splitter's ability to eliminate ghost images affords it a noteworthy advantage over a plate beamsplitter. Cube beamsplitters can



What is a Beam Splitter: Types And Applications

A beam splitter is a device used to separate or combine light. It is widely used in guiding light in optical systems, enhancing imaging and

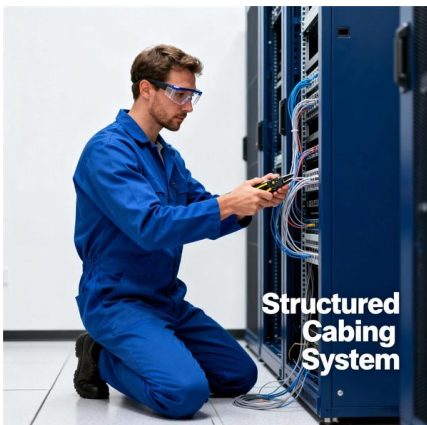


Beam splitter

Beam splitters A beam splitter or beamsplitter is an optical device that splits a beam of light into a transmitted and a reflected beam. It is a crucial part of many optical

Beam Splitters: Types and Applications

In contrast, polarizing beam splitters split light into S-polarized and P-polarized beams, which can be useful for optical isolation and other applications. Dichroic



How does a Cube Beamsplitter Split Light Beams?

Understanding how these devices split light beams is key to appreciating their role and functionality. In this blog post, we'll delve into the



Beam Splitter , Precision, Applications & Design Principles

The ratio of split light can vary, offering flexibility in applications requiring different light intensities. Material selection is another crucial aspect of



Can somebody recommend an alternative to the beam splitter?

Can somebody recommend an alternative to the beam splitter? If I need perform some experiment, where I need to use beam splitter, but I don't have it.

What are Beamsplitters?

Standard Beamsplitters are commonly used with unpolarized light sources, such as natural or polychromatic, in applications where polarization state is not important.



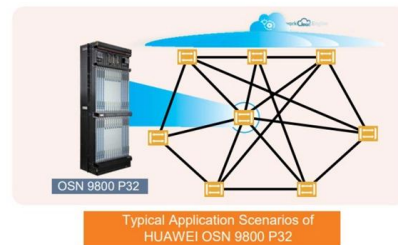
beamsplitters selection guide

Eliminates the problem of beam deviation. For a compact size optical set up. For high accuracy experiment and optical set up usage. Lasers are used to evaluate our half mirrors and with the



Understanding Beamsplitters: A Comprehensive Guide

Beamsplitters are optical components used to split an incoming light beam into two independent beams. Depending on the application, they can also combine two



Beam splitter

Overview Designs Phase shift Classical lossless beam splitter Use in experiments Quantum mechanical description Reflection beam splitters

A beam splitter or beamsplitter is an optical device that splits a beam of light into a transmitted and a reflected beam. It is a crucial part of many optical experimental and measurement systems, such as interferometers, also finding widespread application in fibre optic telecommunications.

An Introduction to beam splitter

A beam splitter is an optical element that splits incident light into two beams of the same wavelength or two beams of different wavelengths. It is also possible to



Covering the Basics of Beamsplitters -- Firebird Optics

Beam splitters are integral to most optical systems and are also used in interferometers, fiber optics and imaging systems. There are several different

Contact Us

For datasheets, pricing, or custom telecom energy solutions, please visit:
<https://www.koskolong.co.za>