



**Adam Tas Corridor Energy**

# **What does 133 represent in relay protection**





## Overview

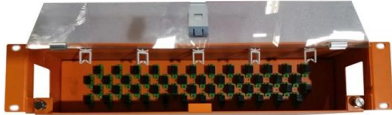
---

In and, ANSI Device Numbers can be used to identify equipment and devices in a system such as,, or. Many of these devices protect electrical systems and individual system components from damage whe. Device number 1 3 4 Time-delay starting or closing relay is a device that functions to give a desired amount of time delay before or after any point of operation in a switching sequence or protective relay system, except as specifically provided by device functions 48, 62 and 79. The protection and control devices in electrical equipment can be referred to by numbers, with appropriate suffix letters when necessary, according to the functions they perform. Cables in this category may be applied where the power system's protective relaying apparatus can clear a ground fault (an unintentional connection to ground of one or more current-carrying conductors) in less than 1 minute.



## What does 133 represent in relay protection

---



### Table of ANSI IEEE Standard Device Numbers

This table details ANSI IEEE Standard Device Numbers as used for protective relaying in North America. Suffixes for numbers are also suggested.

### Protective Relay Basics Part 2

Part 1: Protective relay compared to low voltage circuit breaker. Review fundamental concepts, components, and terminology using the electromechanical overcurrent relay as a foundation.



### ANSI device numbers

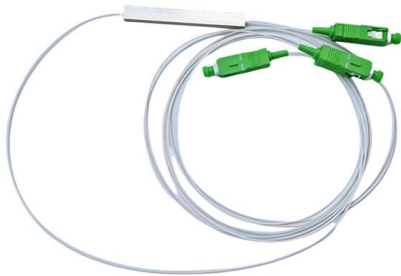
Today, microprocessor -based relays can perform many protective functions in one device. When one device performs several protective functions, it is typically denoted "11" by the standard as a

### Type IRV Directional Overcurrent Relay for Phase Protection

These relays are phase directional overcurrent relays which are used for the protection of



transmission lines and feeder circuits. Both the time-overcurrent and instantaneous overcurrent units are



### **Selection of the Insulation Level for Power Cables**

100% insulation level is for systems with solid grounding and short fault duration. 133% insulation level is for systems with ungrounded or impedance

### **Power System Protective Relays: Principles & Practices**

Protective relays and devices have been developed over 100 years ago to provide "lastline"of defense for the electrical systems. They are intended to quickly identify a fault and isolate it so the balance of



### **What do multiple contact ratings on a relay represent?**

Yes. And, both the voltage and current ratings are maximums that are independent of each other. For a 1 VAC signal, the max current still is 10 A. The



## Protection Relay

In the design of electrical power systems, the ANSI Standard Device Numbers denote what features a protective device supports (such as a relay or

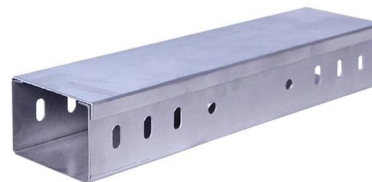


## Protective Relaying Principles and Applications

Protective Relaying Principles and Applications  
The article provides an overview of protective relaying principles and their applications for high-voltage power system

## Basic protection relay knowledge

STABILITY OF PROTECTION A protection scheme - for example, a differential protection scheme - is stable when it does not operate on the fault outside of its protected zone . So, stability of protection is



## Electrical System Protection Relay Selections IEEE ANSI Codes

Selecting the correct protection relays based on ANSI codes is critical for ensuring electrical system safety. Protection relays are responsible for detecting faults in the system and



## What to Know About Protective Relays , EC& M

Protective relays are arguably the least understood component of medium voltage (MV) circuit protection. In fact, some believe that MV circuit breakers operate by themselves, without direct



## Introduction to Protective Relaying , Electric Power

Introduction to Protective Relaying What are Protective Relays, or Protection Relays? Protective relays are used in industrial power generation and supply

## Definition of Relay Terminolo

PROTECTIVE CONSTRUCTION Several different degrees of protection are provided for different relay types, for resistance to dust, flux, contaminating environments, automatic cleaning, etc.





## **ANSI Device Numbers for Relays , PDF , Relay , Switch**

ANSI device numbers denote the functions of protective devices

## **IEEE Guide for Protective Relay Applications to Transmission Lines**

The impact of different electrical parameters and system performance considerations on the selection of relays and protection schemes is discussed. The purpose of this guide is to provide a reference for



## **Relays for Protection against 50 MVA 132/33 kV**

Relays for Protection against 50 MVA 132/33 kV Transformer 2 Comments / Sub-Station Engineering / By Electrical Notebook ANSI Code for Relay and Other

## **Protective relay**

Electromechanical protective relays at a hydroelectric generating plant. The relays are in round glass cases. The rectangular devices are test connection blocks,



## A Guide to ANSI/IEEE Function Numbers

These standardized numerical codes, ranging from 1 to 99, represent specific functions of protective relays, associated devices, and control equipment



## Protection and Control Device Numbers and Functions

The protection and control devices in electrical equipment can be referred to by numbers, with appropriate suffix letters when necessary, according to the functions they perform.



## ANSI device numbers

In electric power systems and industrial automation, ANSI Device Numbers can be used to identify equipment and devices in a system such as relays, circuit breakers, or instruments. The device numbers are enumerated in ANSI/IEEE Standard C37.2 Standard for Electrical Power System Device Function Numbers, Acronyms, and Contact Designations. Many of these devices protect electrical systems and



individual system components from damage whe

## Understanding Relays, part 2: DIN numbers and

Perhaps it is most useful in describing, understanding, and troubleshooting relays since the function of a relay, the socket it sits in, and the

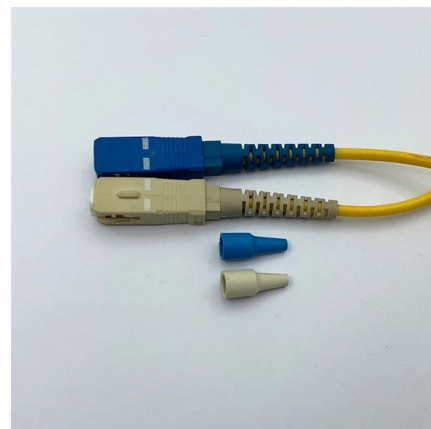


## ANSI Standard Device Numbers & Common Acronyms

ANSI Standard Device Numbers & Common Acronyms ANSI Standard Device Numbers & Common Acronyms

## Types of Protective Relays

This article covers various types of protective relays, such as overcurrent, directional, and differential relays, highlighting their operating characteristics and applications



## All Types of Relay Symbols and Its Basics

Introduction Relays are fundamental components in modern electronics, serving as switches that open and close circuits both electronically



## Relay Symbols & Device Numbers: IEC & IEEE Standards

Device number 1 3 4 Time-delay starting or closing relay is a device that functions to give a desired amount of time delay before or after any point of operation in a



## Protective Relay Decisions In Electrical Protection Systems

This page addresses the role of protective relays within electrical protection systems and the decisions they influence. It does not attempt to catalogue relay types, list

## What Are The Numbers On A Relay

By understanding the numbers on a relay, you can ensure that you're using the right relays for your system and avoid damaging it. In addition to these





## Basic protection relay knowledge

STABILITY OF POTECTION A protection scheme - for example, a differential protection scheme - is stable when it does not operate on the fault outside of its protected zone . So, stability of protection is

## Contact Us

---

For datasheets, pricing, or custom telecom energy solutions, please visit:  
<https://www.koskolong.co.za>