



**Adam Tas Corridor Energy**

# What does SX mean in Huijue optical modules





## Overview

---

The SX SFP module is a hot-swappable input/output device that plugs into a Gigabit Ethernet port or slot, linking the port with the network via multimode fiber. "SX" stands for Short Wavelength, specifically referring to the 850 nanometer (nm) optical window used for signal. When you see a module labeled 1000BASE-SX SFP, it tells you three key things immediately: Speed: It runs at 1 Gigabit (1000 Mbps). Among the most commonly used standards in Ethernet SFP modules are SX, SR, LX, and LH. While they may look similar at first glance, each type serves a distinct purpose based on transmission distance, wavelength, and fiber type. SFPs allow network equipment like switches and routers to connect to various types of fiber optic cables. ☐☐ One Minute to Understand SFP SX, LX, EX, ZX, SR, LR, ER, ZR (Especially for those new to fiber optics ) ☐☐ ☐☐ At Sate Optics, we often get questions from new customers about what abbreviations like SX or LX actually mean when it comes to SFP transceivers. SX to SX optical module use MM multimode fiber, MM normally use OM1 or OM2 patch cord.



## What does SX mean in Huijue optical modules

---

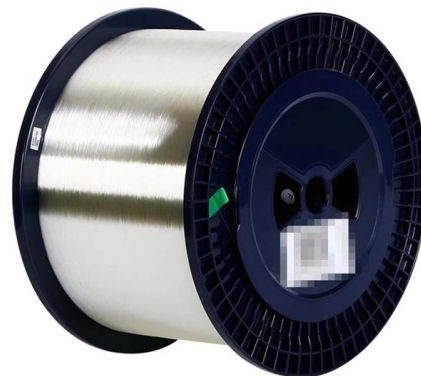


### **SX SFP Module Guide: Specs, Distance & 1000BASE-SX vs LX Deep**

In the landscape of Gigabit Ethernet connectivity, the SX SFP module (Short Wavelength Small Form-factor Pluggable) stands as the ubiquitous standard for short-range fiber optic

### **Understanding Optical Modules**

Therefore, when using such optical modules, select optical fibers of an appropriate length to ensure that the actual receive power is smaller than the overload power. If the optical fibers connected to a long



### **Understanding Single-mode and Multi-mode Optical**

Multi-mode Optical Module: · Paired with Multi-mode Fiber: Multi-mode optical modules are specifically designed to work with multi-mode optical fibers. This

### **What is the difference between sx and fx sfp?**

SX SFP modules are typically used for short-range communication. The "SX" stands for "Short Wavelength," which refers to the wavelength of



the laser signal used in these modules.



### One minute to know about SFP SX LX EX ZX SR LR ER

Some HTF new customers are not clear about the abbreviations for SX. So share the following with new customers, In order to help them quickly to



### Understanding SFP SX, LX, EX, ZX, SR, LR, ER, ZR

? One Minute to Understand SFP SX, LX, EX, ZX, SR, LR, ER, ZR (Especially for those new to fiber optics) ?? At Sate Optics, we often get questions from new



### Unraveling 1G SFP Optical Module Functionality and the

Conclusion In conclusion, understanding the functionality of the 1G SFP optical module and the differences between 1000BASE-SX and 1000BASE





## How to Choose LX or SX SFP Module

The "SX" stands for "Short Wavelength," and these modules typically use a wavelength of 850nm. SX SFP modules support transmission distances of up to



## 1G SX SFP Module Specifications and Compatibility Guide

This guide provides a complete overview of 1G SX SFP Modules, covering technical specs, compatibility, deployment best practices, and answers to frequently asked questions. By



## Types of Optical Modules

Therefore, when using such optical modules, select optical fibers of an appropriate length to ensure that the actual receive power is smaller than the overload power. If the optical fibers connected to a long



## SX SFP Transceivers: Specifications, Applications

Key Specifications and Features of SX SFP Modules SX SFP modules are designed for optimal network performance. They support data rates



## Exploring How 1G SFP Work and the Difference

Explore the world of 1G SFP modules and discover how they work, including the differences between 1000BASE-SX and 1000BASE-LX standards.



## The Benefits of 1G Optical Transceivers and the

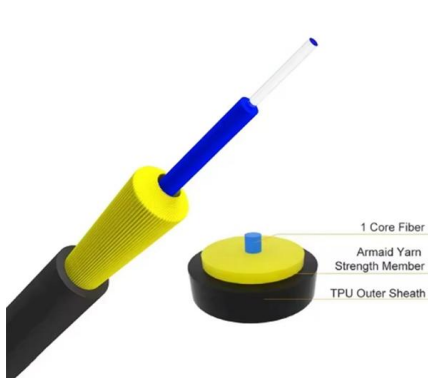
Discover the game-changing benefits of 1G optical transceivers and the key differences between 1G LX and SX modules in this enlightening blog.



## What is a 1000BASE-SX SFP Optical Transceiver

A 1000BASE-SX SFP is a gigabit transceiver for multimode fiber, enabling 1Gbps Ethernet connections up to 550 meters using 850nm wavelength.



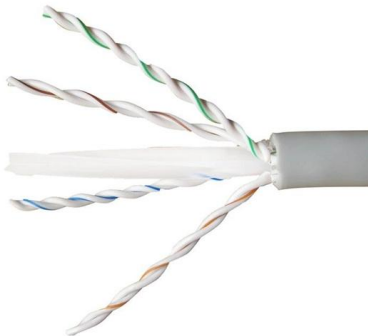


## SX SFP Module Guide: SX vs LX vs SR Differences Explained

Plugging an "LX" module into an "SX" port won't work. Plugging a 10G "SR" module into a 1G "SX" switch might not link up. Among all these options, the SX SFP Modul is the most common workhorse

## SX SFP Module Guide: SX vs LX vs SR Differences Explained

In the world of fiber optics, "Short Wavelength" specifically refers to light in the 850nm range. When you see a module labeled 1000BASE-SX SFP, it tells you three key things immediately: Speed: It runs at



## One minute to know about SFP SX LX EX ZX SR LR ER

SX to SX optical module use MM multimode fiber, MM normally use OM1 or OM2 patch cord. LX to LX optical module use SM singlemode fiber, SM

## What Is 1000BASE-SX SFP Transceiver Module: Complete Guide

In practical terms, compliance with IEEE 802.3z means a 1000BASE-SX SFP module can work reliably across compliant switches, routers, and network interface cards without proprietary lock-in. The "SX"

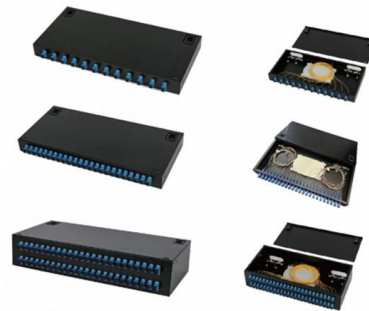


## Understanding SFP SX, LX, EX, ZX, SR, LR, ER, ZR

So here's a simple, 1-minute guide to help you decode them easily: ? What do these letters mean? ? For 1.25G SFP modules: 1? SX - 850nm, Multi-Mode Fiber (MM),

## Guide to Optical Transceiver Standards

Transceiver part codes are typically made up of a set of technical and logical factors related to the specific optical transceiver.



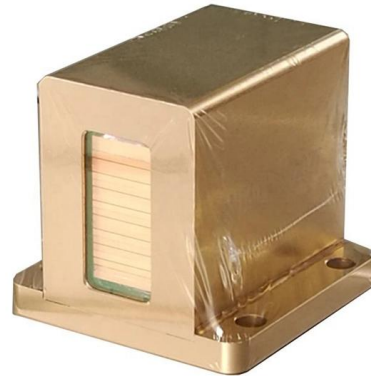
## 1000BASE-SX VS 1000BASE-LX SFP Transceivers

The "SX" stands for short distances between 220m and 550m reach over multimode fiber. Taking FS 850nm 1000BASE-SX SFP module (SFP1G-SX-85) as an example, transmission



## What is the difference between LX and SX transceivers?

LX and SX transceivers are both types of optical transceivers used in fiber optic communication. The main difference between the two is the type of fiber they are designed to work



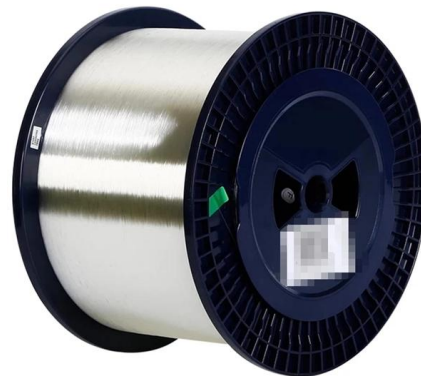
## One Minute to Understand SFP SX, LX, EX, ZX, SR,

? At Sate Optics, we often get questions from new customers about what abbreviations like SX or LX actually mean when it comes to SFP



## SX vs SR vs LX vs LH Explained: A Simple Guide

Fiber optic networks rely heavily on transceiver modules to transmit data efficiently across different distances and network environments. Among the most commonly used standards in Ethernet SFP



## 1000BASE-SX vs. 1000BASE-LX, Which SFP Module

In 1000BASE-SX, "SX" stands for "Short Wavelength", which refers to the use of wavelengths in the range of 770nm to 860nm for data transmission.





## How Can I Interpret the Name of an Optical Module?

Understanding naming conventions of an optical module help you obtain all information contained in the optical module's name. This section uses general naming conventions as an example.



## Contact Us

---

For datasheets, pricing, or custom telecom energy solutions, please visit:  
<https://www.koskolong.co.za>