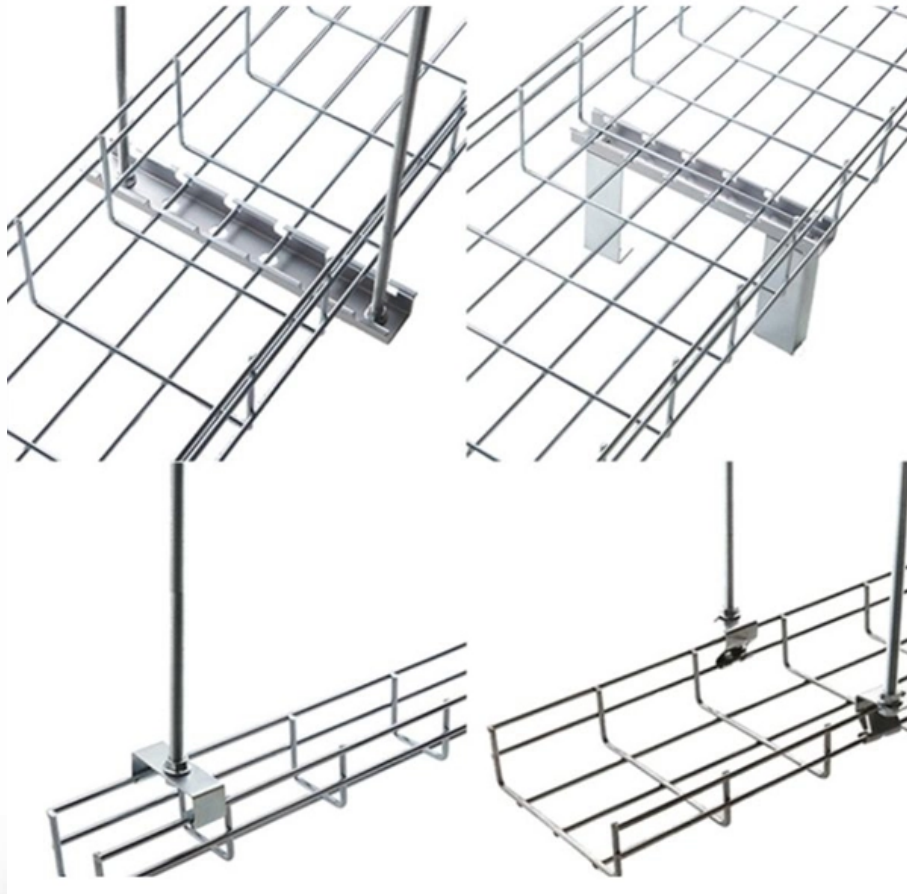




Adam Tas Corridor Energy

What does a PON consist of specifically optical line terminals





Overview

A PON consists of a central office node, called an optical line terminal (OLT), one or more user nodes, called optical network units (ONUs) or optical network terminals (ONTs), and the fibers and splitters between them, called the optical distribution network (ODN). A passive optical network (PON) is a fiber-based access network that uses unpowered optical components to deliver high-speed connectivity from a service provider to many end users. Instead of running a separate fiber strand to every home or office, a PON shares a single fiber using optical. The shift from outdated electrical copper systems to optical fiber is driven by the immutable demands for.



What does a PON consist of specifically optical line terminals

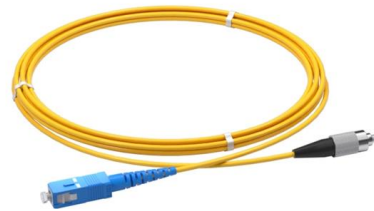


The Comprehensive Guide to PON Architecture: Mastering OLT,

Achieving service excellence and maximizing return on investment (ROI) demands a deep, technical mastery of the four core components: the Optical Line Terminal (OLT), the Optical

What are OLT, ONU, ONT and ODN in PON?

Optical Distribution Network (ODN) is the PON physical layer that connects OLTs to ONUs or ONTs. Provides optical transmission media for



What is a Passive Optical Network (PON)? , Glossary

What is a passive optical network (PON)? A passive optical network (PON) uses fiber-optic technology to deliver data from a single source to multiple

A Guide to Passive Optical Networking (PON)

Multipoint Connectivity PON provides the flexibility of multiple connectivity options,



including Ethernet, phone, video, wireless access point, and various controls. How does a Passive



What is PON? Passive Optical Networks Explained Global

A passive optical network (PON) is a shared, fiber optic access network that uses unpowered optical splitters to connect many users to a single OLT. PONs deliver high-speed



What is PON? Passive Optical Networks Explained Global

Summary: What is PON and why should you care? A passive optical network (PON) is a shared, fiber optic access network that uses unpowered optical splitters to connect many users to a



What is PON? Passive Optical Networks Explained

Summary: What is PON and why should you care? A passive optical network (PON) is a shared, fiber optic access network that uses unpowered optical splitters to connect many users to a





Introduction To PON (Passive Optical Network) And Its

PON features a point-to-multipoint (P2MP) structure, consisting of three core components: Optical Line Terminal (OLT), Optical Network Unit



What Is ONT? Understand Optical Network Terminal in

How Does an ONT Work in a Fiber Network In Passive Optical Network (PON) deployments, the ONT functions as the gateway between the

What Is a PON (Passive Optical Network)? FTTH Home Broadband

How Does PON Work? At its core, a Passive Optical Network is a point-to-multipoint architecture. It begins at the service provider's central office, where the Optical Line Terminal (OLT)



PON What is a Passive Optical Network for Fiber

A passive optical network (PON) is a fiber-optic network that allows an Internet service provider (ISP) and consumer to communicate. This is how you get



PON Network Components Overview: OLT, ONU, ONT,

PON (Passive Optical Network) refers to a fiber optic network built using a point-to-multipoint topology and fiber optic splitters. This network is



PON Network Basics: Understanding the Concept,

They consist of an Optical Line Terminal, Optical Network Units, and Passive Optical Splitters. There are different classifications of PON networks, including GPON,

What Is Passive Optical Networking (PON)?

In a PON network, a device called an optical line terminal (OLT) is placed at the head end of the network. A single fiber-optic cable runs from the OLT to a nonpowered



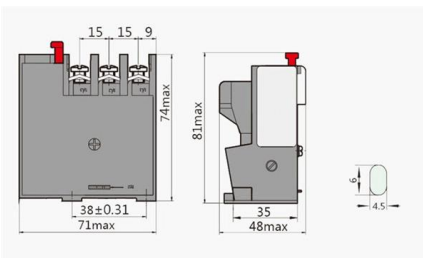


What is a passive optical network (PON) and how does

A PON system consists of an optical line terminal (OLT) at the communication company's central office and several optical network units (ONUs)

What is Passive Optical Network (PON)? Everything

Optical Line Terminal: Also known as OLT, it is the heart of a passive optical network and serves as the entry point. Its main job is to convert the FiOS



PON for Dummies: Understanding Passive Optical

A passive optical network (PON) is a point-to-multipoint fiber network architecture that uses optical splitters to deliver high-bandwidth services from a single fiber to

How OLTs Power Modern PON Fiber Optic Networks , IASPOINT

An optical line terminal (OLT) is a key component of passive optical networks (PONs). It is usually located in the service provider's central office and connects the optical fiber backbone to

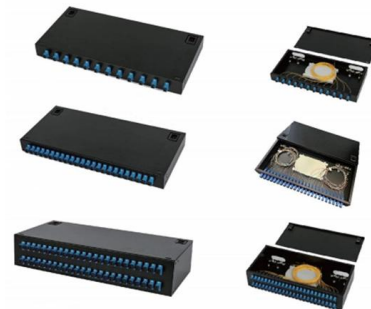


What is PON Modules and Its Role in Modern Networking

A PON module is an optical transceiver specifically designed for Passive Optical Network applications. Unlike active optical components requiring

Chapter 2 PON Architectures

PON Architectures Passive Optical Network (PON) is a set of technologies standardized by ITU-T and IEEE, although it is originally created by the Full Service Access Network (FSAN) working group.



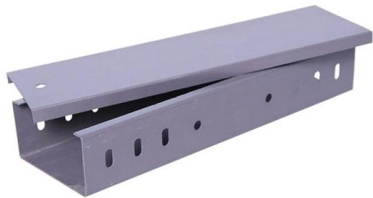
The FOA Reference For Fiber Optics

In the CO or head end, the OLT (optical line terminal) has a port that connects to a single fiber, transmitting data bidirectionally at different wavelengths to a splitter



Understanding OLT, ONU, ONT and ODN in PON

OLT is short for optical line terminal, which is a device used to connect optical fiber and transfer signals. OLT is the starting point for the PON,



What Is a Passive Optical Network (PON)? Architecture and Use Cases

1. **Optical Line Terminal (OLT):** Located at the service provider's central office, the OLT is responsible for converting electrical signals to optical signals and vice versa. It manages upstream

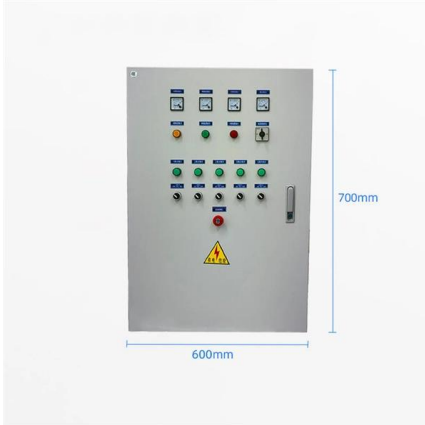
What is Passive Optical Network (PON)?

What is PON (Passive Optical Network)? PON stands for Passive Optical Network, a fiber-optic communication system designed for high-speed



What Are Passive Optical Networks (PON) and How Do

The main parts of PON are Optical Line Terminals (OLT), fiber cables, passive splitters, and Optical Network Units (ONU). These parts work



PON, EPON, GPON: Everything You Need to Know

Fiber optic Internet is a superfast broadband connection. On an optic fiber line, information is transmitted through pulses of infrared light. To better understand



Full Guide of PON: OLT, ONT, ONU, ODN and other

In this guide, we'll break down the key components of a PON, including Optical Line Terminals (OLT), Optical Network Units (ONU), Optical

What Is Passive Optical Networking (PON)? GPON vs. EPON

A PON network consists exclusively of passive optical components. This prevents electromagnetic interference from external devices and lightning strikes, reduces the failure rate of





Contact Us

For datasheets, pricing, or custom telecom energy solutions, please visit:
<https://www.koskolong.co.za>