



Adam Tas Corridor Energy

What does switch access end mean





Overview

Switch Access lets you interact with your Android device using one or more switches instead of the touchscreen.



What does switch access end mean



Switch access

Switch access is the use of one or more switches to operate computers and other devices and is primarily used by people with severe physical or cognitive impairment. A switch is an assistive

Turn off Switch Access

Select Accessibility Switch Access. At the top, select the On/Off switch. For more Accessibility help, contact the Disability Support team.



Use Switch Access

When you use Switch Access, it scans the items on your screen until you use a switch to make a selection. Switches can be used with the built-in keyboard or an external device that you

What is the Access Switch?

What does an Access Layer Switch do? As the physical entity of the access layer, access switches are responsible to connect both to the



distribution layer switches

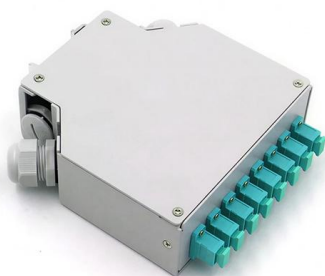


Switch access

Switch access Meaning Switch access is designed to substitute the combination of a keyboard and mouse by connecting the functions of a keyboard and mouse to other buttons. It might be a button

What is Access Control List (ACL) and How Does It Work?

Discover the vital role of Access Control Lists (ACLs) in network security, their functionality, and their importance in managing traffic and



Controlling Switch Access with Passwords and Privilege Levels

The password-recovery disable feature protects access to the switch password by disabling part of this functionality. When this feature is enabled, the end user can interrupt the boot process only by



Description of Switchport Mode Access vs Trunk Modes

In this article, we will discuss a couple of core concepts of network switching which are about Access and Trunk ports and how to configure them using " switchport



Change Switch Access settings

When you toggle Enable Menu Customization to "on," it allows you to change what appears in the Switch Access global menu. If the toggle is off, your changes don't update in the global menu. You

What Is a Switch? Computer Networking

A network switch is a central communication device for local area Ethernet networks. Many home broadband routers feature an embedded Ethernet



FS Community

Hier sollte eine Beschreibung angezeigt werden, diese Seite lässt dies jedoch nicht zu.



Set up Switch Access for Android

After you connect an external switch device or keyboard, Android automatically hides the on-screen keyboard. To enter text with Switch Access, you need to re-enable the keyboard. To re-enable



What is a Network Switch and How Does it Work

A switch is a network device that connects devices in a LAN, sending data only to the intended device for efficient, secure, and fast communication.

Security Configuration Guide, Cisco IOS XE 17.17.x (Catalyst 9600)

This chapter provides configuration information about controlling switch access with passwords and privilege levels.





Tips for using Switch Access

After you set up Switch Access, use these tips to get started. Basic navigation If you use auto-scanning To start the scan, pres

Switch access to technology

It details the ways in which switch users interact with computer programs and other technology designed to be directly accessible to them. The

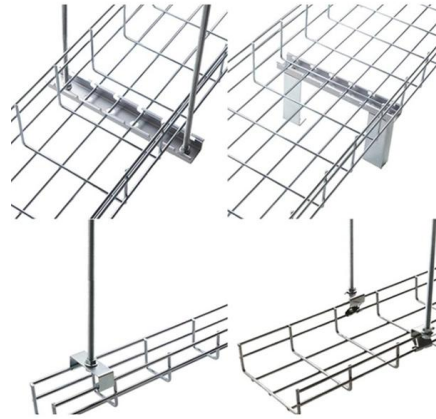


Change Switch Access settings

Open your device's Settings app . Open Accessibility Switch Access Settings. Assign switches for scanning When you set up Switch Access for Android, you can choose which switches or keyboard

Set up Switch Access for Android

Follow the steps below to set up Switch Access for your Android device. Important: Some of these steps require you to touch the screen. Contents S



Switch access

Switch access is the use of one or more switches to operate computers and other devices and is primarily used by people with severe physical or cognitive impairment. A switch is an assistive

Switch access

In the more complex use, they could be the means to control mobility or interact with the environment. There are a variety of motivating switch activities that can be used to assess and develop a person's



Core Switch vs. Distribution Switch vs. Access Switch

What is a Core Switch? A core switch is the primary switch installed at the backbone of a layered or hierarchical network. These data switches are responsible for



Understanding the Role of an Access Switch in Your

Q: How does an access switch differ from a core switch in a network? A: Access switches, also called data switches, are designed primarily for

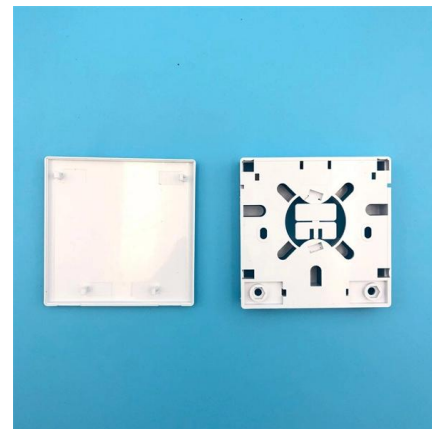


What is a network switch? , Switch vs. router

A network switch forwards data between devices, unlike routers, which forward data between networks. Learn about Ethernet switches, managed switches, and more.

Controlling Switch Access with Passwords and Privilege Levels

By default, any end user with physical access to the switch can recover from a lost password by interrupting the boot process while the switch is powering on and then by entering a new password.



Turn off Switch Access

Open your Android device's Settings app . Select Accessibility Switch Access. At the top, select the On/Off switch. Get more help For more Accessibility help, contact the Disability Support team.



What is a Network Switch and How Does it Work?

Learn what is a network switch, its types, features, working, comparison with hub, router and bridge and its role in modern communication.



Contact Us

For datasheets, pricing, or custom telecom energy solutions, please visit:
<https://www.koskolong.co.za>