



**Adam Tas Corridor Energy**

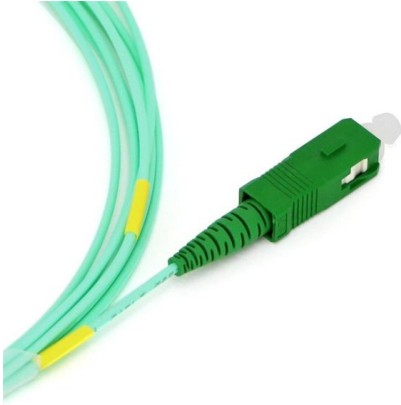
# **What does the electrical box guardrail include**





## What does the electrical box guardrail include

---



### Electrical Panel Safety Barrier , Equipment Protection System

The electrical panel safety barrier maintains a safe distance between workers and electrical systems while allowing easy access for authorized maintenance and inspection when needed.

### Guardrail systems

2. The most practical means for providing protection and preventing falls is the erection of guardrails along exposed edges or across openings such as stairwells, chute openings, hatchways, elevator



### The Comprehensive Guide to Guard Rails

Industrial guard rails safeguard workers and equipment in industrial settings, including warehouses and factories. They are typically constructed from heavy

### Guardrails

Electrical Panel Guardrails Protect vulnerable electrical equipment from collision damage with Cogan heavy-duty electrical panel guardrail. In a



busy warehouse setting, accidents can happen without

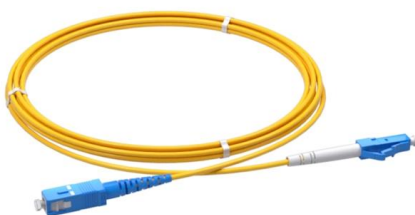


### Installation of Guard Rail Kits: Procedure and Safety Precautions

The best guardrail systems combine durability, proper materials, and careful installation to create a reliable safety barrier.

### Toolbox Talk: Guardrails for Fall Protection

Guardrails for Fall Protection Each employee shall be protected from falling from exposed sides or edges and objects falling from work areas 4 feet



### FactSheet

Not to stand on the guardrail or use any components of the scaffold or other items (e.g., stepladders, buckets, boxes, barrels, etc.) inside the scaffold to gain additional standing height.  
Not to try to pull



## What Is a Guardrail? Everything You Need to Know

Discover what a guardrail is and how it safeguards workers from falls. Enhance workplace safety with effective systems and OSHA-compliant standards.



## Guardrail systems: Installation and use

Understanding Guardrail Systems Guardrail systems are safety barriers installed along edges, openings, or elevated areas to prevent falls. These systems come

## Guard Rail: Exploring the Significance, Regulations and Installation

What is a Guard Rail? A guard rail, also known as a safety rail, is a protective barrier or railing system designed to prevent



## Guardrail Specifications and Installation

It provides details on installing various types of guardrails (e.g. W-beam, box beam, cable) according to standard drawings, as well as removing and



## Full Guide to Panel Box

Explore the complete guide to electrical panels, including their components, functions, installation, maintenance, and how to recognize signs of



## 1926 Subpart M App B

The standard requires guardrail systems and components to be designed and built to meet the requirements of § 1926.502 (b) (3), (4), and (5). This appendix serves as a non-mandatory guideline

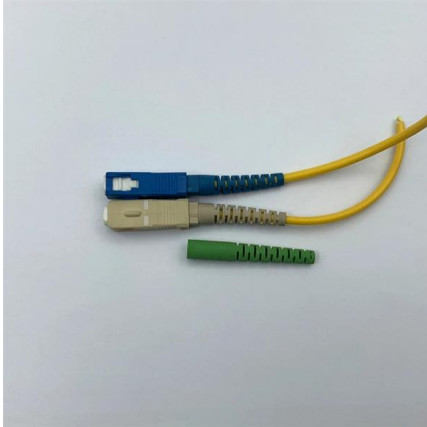
## Electrical Panel Guarding Solutions

Even when the floor is clearly marked, carts, boxes and other miscellaneous items end up being left in the restricted area. That is why many of



## OSHA Technical Manual (OTM)

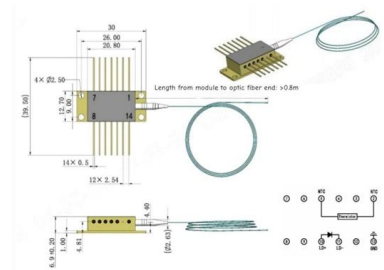
A guardrail system can be used as a barrier installed to prevent workers from falling off a work surface edge to a lower level. Guardrail systems can be used on many



### 15192; 15193 Trench Box Guardrail System cutsheet (Rev. B)

Installation requirements for Trench Box Guardrail System set forth in this manual MUST be adhered to. Personal Fall Arrest, Work Positioning, Climbing, Rescue, and any other systems must NEVER be

Outline drawings  
mm



### Guardrails and Railings Selection Guide: Types,

Handrail brackets Top fix rail assemblies Product specifications for guardrails and railings include Color choices include white, black, yellow, red, blue, green and

### Design of Commercial / Industrial Guardrail Systems for Fall Protection

This course provides a procedure for designing or evaluating guardrail systems in commercial / industrial applications. Several published methods, tables and charts from industry manuals, manufacturer's





## Guardrail systems

Guardrail Fall prevention and wall openings and open-sided floors from elevations. Falls from elevations also cause many serious injuries resulting in significant ti

### Guardrail 101

II. Function of the Guardrail Guardrails function as a system, which includes the guardrail itself, the posts, the soil that the posts are driven in, the connection of the guardrail to the posts, the end

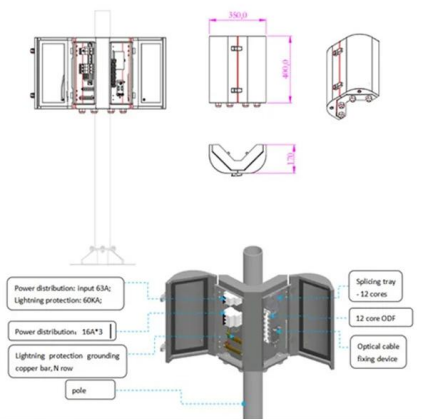


### Open Box Beam Guard Rails with End Beams and Terminals

The most common type of open box beam guardrail consists of two steel posts supporting an angled rail that is held in place by a horizontal cable. Main specifications and dimensions of open box beam

### 85088 (Rev. C) 15192; 15193 Trench Box Guardrail System small

This and any other included instructions must be made available to the user of the equipment. The user must understand how to safely and effectively use the Trench Box Guardrail System, and all fall



## Understanding Guardrail System Components for Safety and Protection

Understanding guardrail system components is essential for everyone involved in construction, road safety, and public infrastructure. Guardrails are designed to prevent vehicles from veering off

## OSHA Guardrail Requirements Explained

OSHA Guardrail Requirements Explained  
Recognizing potential fall risks is just one way of maintaining a safe workplace, and it's crucial to understand the OSHA guardrail requirements to



### Huijue engineering specific Fiber optic

HJ GROUP offers a wide variety of product types for you to choose from.



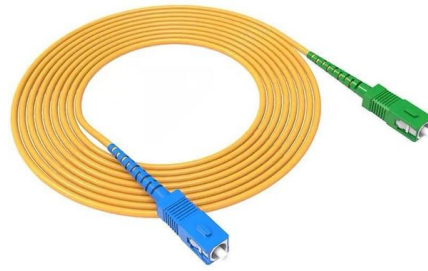
## What Is a Guardrail: Components, Standards, and Best-Fit Applications

What Is A Guardrail? Guardrails serve as passive fall protection in the Hierarchy of Fall Protection. The standard guardrail system features a toprail, intermediate (or mid) rail, and support



## V DOT/ F H WA

A construction zone is a location that requires good engineering judgment for any safety concerns that may warrant the use of a standard FOA which includes the rubrail, especially if the concrete barrier

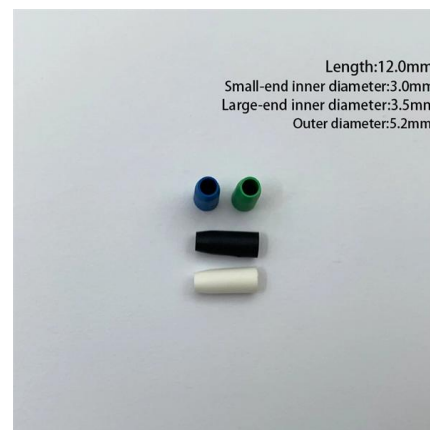


## Electrical systems mounted to handrails , Information by Electrical

Handrails are commonly used in industrial facilities to support conduit, control stations, light standards and even junction boxes. The top rail must have at least 3" clearance per OSHA rules.

## Guardrail systems: Installation and use

Guardrail systems are safety barriers installed along edges, openings, or elevated areas to prevent falls. These systems come in various forms, including portable,



## Contact Us

For datasheets, pricing, or custom telecom energy solutions, please visit:  
<https://www.koskolong.co.za>