



Adam Tas Corridor Energy

What does the size w of the distribution box represent



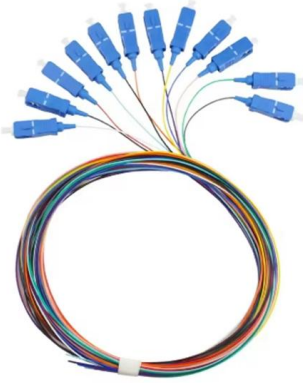


Overview

Since the mathematician first popularized this type of visual data display in 1969, several variations on the classical box plot have been developed, and the two most commonly found variations are the variable-width box plots and the notched box plots. Variable-width box plots illustrate the size of each group whose data is being plotted. For a deeper dive into the IQR as a spread metric, see our IQR method documentation. It displays the distribution of data using a rectangular box and two whiskers making it easy to understand the spread, central tendency and presence of extreme.



What does the size w of the distribution box represent

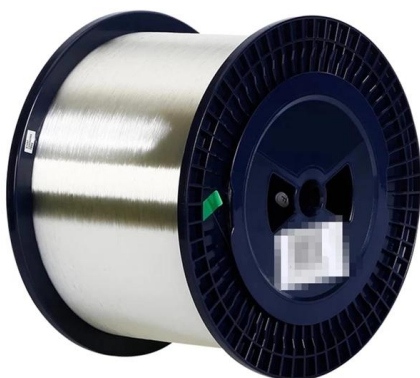


Distribution Box Guide: Types, Components & Solutions

Understand distribution boxes (DB boxes) in 5 minutes. Learn about types, components, functions, and uses. Find the perfect DB box for your needs.

What Is a Distribution Box?

What to Look for When Choosing a Distribution Box If you're going to buy a distribution box, there are several things you should look for. You should



Quora

Hier sollte eine Beschreibung angezeigt werden, diese Seite lässt dies jedoch nicht zu.

Box and Whisker Plot , Brilliant Math & Science Wiki

A box and whisker plot is a representation of statistical data that displays information about the distribution of the values. Here's an



example of a box and



What Is a Box Plot and How to Read It

Learning how to read a box plot reveals key data insights and helps you interpret distribution patterns effectively.



Box Plot Explained with Examples

What Is A Box Plot? Anatomy of A Box and Whisker Plot How to Read A Box Plot Box Plot Example: Comparing Groups A box and whisker plot allows you quickly assess a distribution's central tendency, variability, and skewness. Let me show you how! See more on statisticsbyjim Atlassian

A complete guide to box plots - Atlassian

A box plot (aka box and whisker plot) uses boxes and lines to depict the distributions of one or more groups of numeric data. Box limits indicate the range of the central



What Is a Boxplot? (Definition + How to Use One) , Built In



A boxplot (box plot) is a graph that tells you how your data's values are spread out. Learn more about how to read a boxplot, when to use one and how to create one.



A comprehensive understanding of distribution box

Choosing the right distribution box is very important. It keeps your electrical system safe, efficient, and reliable. Think about size, capacity, and use.



BYJU'S Online learning Programs For K3, K10, K12,

When we display the data distribution in a standardized way using 5 summary - minimum, Q1 (First Quartile), median, Q3 (third Quartile), and maximum, it is

How to Interpret a Boxplot

The width of the box (the IQR) is the most robust measure of spread. A wide box means high variability in the central portion of the data; a narrow box means the middle values are tightly clustered.



Mastering Boxplot: Meaning, Reading and Creating

The top and bottom of the box represent the upper and lower quartiles, respectively, while the line inside the box represents the median, dividing it into



Box Plots: A Guide to Represent Probability Distributions

Learn how to use box plots to visualize and compare probability distributions, and how to create them in R. Box plots show the median, IQR, range, and outliers of



Understanding and interpreting box plots

Box plots are drawn for groups of W@S scale scores. They enable us to study the distributional characteristics of a group of scores as well as the level of the scores.



Reading a Box and Whisker Plot

Box plots visually show the distribution of numerical data and skewness by displaying the data quartiles (or percentiles) and averages. Box



Box and Whisker Plot Explain with Example

Spread or Variability: The length of the box (IQR) indicates the spread of the middle 50% of the data. A longer box suggests greater variability in this

4.5.2 Visualizing the box and whisker plot

The left and right sides of the box are the lower and upper quartiles. The box covers the interquartile interval, where 50% of the data is found. The vertical line that split the box in two is the median.





The Complete Guide to Distribution Box: Installation, Types & More

Quality distribution boxes represent a wise investment that pays dividends through improved safety, reduced maintenance costs, and enhanced system flexibility. As electrical demands

Box and Whisker Plot Explain with Example

Box and whisker plot, also known as boxplot, are a powerful and versatile tool for visualizing and comparing the distribution of data.



How to Read and Interpret a Box Plot , Actforlibraries

The size of the box can provide an estimate of the kurtosis - the peakedness - of the distribution. A very thin box relative to the whiskers indicates that a very high number of cases are contained within a



How to Use a Box Plot Chart: A Comprehensive Overview

A box plot chart visualizes the distribution of a dataset using five key statistics: minimum, Q1, median, Q3, and maximum. This article will guide you on



Understanding Distribution Boxes: A Comprehensive Guide

A distribution box, also known as a power distribution box or electrical distribution box, is used to distribute electrical power safely to multiple

How to choose the size of distribution box? What kinds

The size of the distribution box used in the room is generally different from that of the general industrial production distribution box. There are many types of indoor



How to Interpret Box Plots: A Comprehensive Guide

Introduction to Box Plots A box plot, also known as a box-and-whisker plot, is a standardized way of displaying the distribution of data based on a five-number





A Guide to Box Packaging: How to Read Box

When you see L x W x H, what does it represent? This notation stands for Length, Width, and Height--three dimensions that define the box's size and



Box plot

Overview Variations History Elements Examples Visualization See also Further reading

Since the mathematician John W. Tukey first popularized this type of visual data display in 1969, several variations on the classical box plot have been developed, and the two most commonly found variations are the variable-width box plots and the notched box plots. Variable-width box plots illustrate the size of each group whose data is being plotted

How to Measure a Box Correctly

Learn how to measure box dimensions like a pro in minutes! A quick & easy guide for accurate packaging measurements Yours Packaging Blog.



Contact Us

For datasheets, pricing, or custom telecom energy solutions, please visit: <https://www.koskolong.co.za>