



Adam Tas Corridor Energy

What equipment is on the upper layer of the beam splitter





Overview

To reduce loss of light due to absorption by the reflective coating, so-called "Swiss-cheese" beam-splitter mirrors have been used. OverviewA beam splitter or beamsplitter is an that splits a beam of into a transmitted and a reflected beam. It is a crucial part of many optical experimental and measurement systems, such as In its most common form, a cube, a beam splitter is made from two triangular glass which are glued together at their base using polyester,, or urethane-based adhesives.



What equipment is on the upper layer of the beam splitter

What is a Beam Splitter: Types And Applications

A beam splitter is a device used to separate or combine light. It is widely used in guiding light in optical systems, enhancing imaging and



What Is a Beam Splitter and How Does It Work?

A beam splitter is an optical instrument that divides an incoming light beam into two or more separate beams. This passive device uses a specialized surface designed to both reflect and



Beam Splitters - optical power splitter, beamsplitter, thin

Beam splitters are devices for splitting a laser beam into two or more beams. There are different types, including polarizing and non-polarizing versions.



Do You Know How to Place and Use the Optical Splitter?

In the realm of optical communication networks, the optical splitter serves a vital role in dividing



and distributing optical signals efficiently.
Understanding how to properly place and use an



Beamsplitters Guide: Principles, Types, and Applications

A beamsplitter is an optical component that splits transmitted light and reflected light at a determined split ratio. Beamsplitters are used in a variety



What are Beamsplitters?

Optical components that create two beams by splitting incident light are beamsplitters. Read more about the different types of beamsplitters at Edmund



What Is an Optical Splitter?

What's an optical splitter? How does the fiber optic splitter work? How many fiber splitter types? How to choose the right fiber splitter? Find the answers





What Is a Beam Splitter and How Does It Work?

The Pellicle Beam Splitter uses an extremely thin membrane of optical film stretched over a frame. Because the film is only a few micrometers thick, this design virtually eliminates unwanted



What is a Beam Splitter?

There are different types of beam splitters; the most important are plate and cube beam splitters as shown in the figure below. Beam splitters are required for various interferometers,

Beam Splitting

Beam splitting is defined as the process of dividing an incident light beam into two or more separate beams, which can be achieved through various structures, including metasurfaces that utilize phase



What is a Beam Splitter?

A beam splitter or power splitter is an optical device that can split an incident light beam e.g. a laser beam into two or sometimes more beams, which may or may not have the same optical



Optical Beam Splitters: Examination of Designs and Applications in

Explore the essential role of optical beam splitters in various fields, including telecommunications, laser systems, and medical devices. Learn about different types of beam splitters, such as plate, cube, and



Beam Splitters: Types and Applications

Beam splitters find their application in a diverse array of fields, from teleprompters to robotics, impacting various technologies we rely on daily. These unassuming



Beam Splitters: Types, Applications, and Selection

Beam splitters are an essential component in modern optics. They play a critical role in many fields, including scientific research, medical imaging,





Beam Splitters: Types and Applications

In real-world applications, beam splitters are the unsung heroes of fiber optic telecommunications, ensuring efficient high-speed internet connections. They are

Beam Splitter

A beam splitter is defined as an optical device that effects a linear transformation of fields presented at two input ports, producing output beams that are related to the input fields in a characteristic manner



How does a beam splitter work? Common types and use cases

Beam splitters are essential optical components used to divide a beam of light into two or more separate beams. They play a crucial role in various scientific, industrial, and everyday

How Beamsplitters Work: Types, Mechanisms, and

Beamsplitters are commonly employed in heads-up displays - transparent surfaces with images projected onto them. For example, some heads



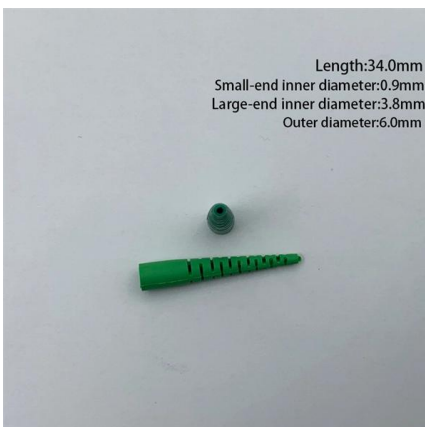
All You Need to Know About Beam Splitters

In real-world use cases, beam splitters are the underdogs of fiber optic telecommunications, guaranteeing efficient high-speed internet connections.



Fiber-optic splitter

Fiber-optic splitter A fiber-optic splitter, also known as a beam splitter, is based on a quartz substrate of an integrated waveguide optical power distribution device, similar to a coaxial cable transmission



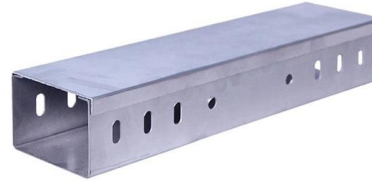
Beam Splitter

A conventional beam splitter is an optical component used to divide an incident beam into two or more beams by refracting or reflecting it. In contrast, artificial nanostructures of metasurfaces provide



Beam Splitters - optical power splitter, beamsplitter, thin-film

For example, beam splitters are required for various interferometers, autocorrelators, photo cameras, projectors and laser systems. The wide range of applications implies widely varying requirements,

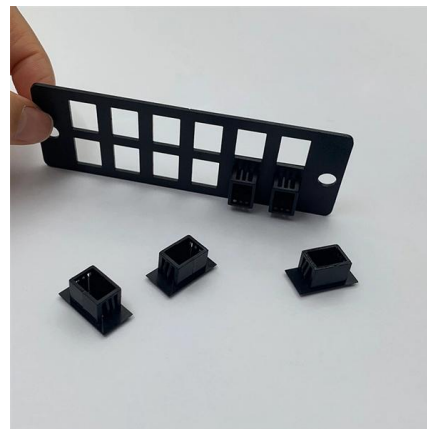


Understanding Beamsplitters: Types, Principles, and

This article explores the fundamental principles and diverse applications of beamsplitters, detailing their different types and uses in fields such as optics

Precision Beamsplitters & Quad-Channel Imaging

A beam splitter (or beamsplitter) is an optical component used to split incident light into two separate beams, typically based on wavelength or polarity. This precise



Covering the Basics of Beamsplitters -- Firebird Optics

A manufacturer can either increase or decrease the thickness of the resin layer to adjust the power splitting ratio for a given wavelength. Additionally,



Beam Splitters

Cube beam splitters consist of two triangular prisms glued together. The beam is split at the interface, and the thickness of this layer can be adjusted to achieve the desired power splitting ratio.



How Does a Beamsplitter Work? , Cube vs. Plate Comparisons

The equipment works by dividing the incoming light into one to two beams, one or more of which are transmitted through the optical element and one or more of which are directed at an angle away from

How Does a Beamsplitter Work? , Cube vs. Plate Comparisons

These beamsplitters eliminate ghosting because the transmitted beam is coherent with the incident light beam. A cube beam splitter has a significant advantage over a plate beamsplitter because ghost





Contact Us

For datasheets, pricing, or custom telecom energy solutions, please visit:
<https://www.koskolong.co.za>