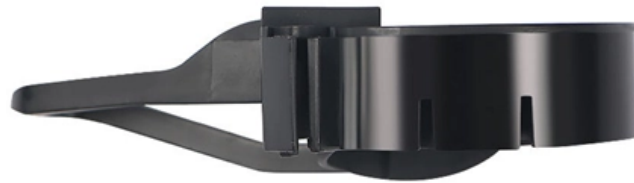




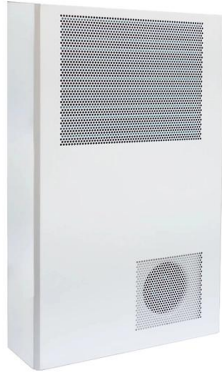
Adam Tas Corridor Energy

What is RJB This likely refers to a power distribution box





What is RJB This likely refers to a power distribution box



Distribution Boxes: Types and Functions

A distribution boxes acts as the load center and main distributor of electrical power within a building. Also called a distribution board, panel board,

Power Distribution Boxes Explained Simply

Learn what a power distribution box is, how it works, key components, types, and why it's vital for safe and efficient electrical systems.



The Ultimate Guide to Distribution Box Types

At its core, a distribution box, also known as a distribution board, panelboard, or fuse box, is a protective enclosure that houses all the electrical components that

Power Distribution Boxes Explained Simply

A power distribution box directs electricity safely and efficiently throughout your system. It



protects against overloads, simplifies power



RJB stands for Relay Junction Box , Abbreviation Finder

Employing the Relay Junction Box abbreviation serves as a mnemonic device and ensures uniformity in official documents. RJB => Relay Junction Box Due to the



How to Wire a Home Distribution Box

Welcome to our channel! In this video, we'll walk you through the process of wiring a home distribution box with a detailed connection diagram.



Power Distribution Boxes: A Complete Overview , Eventech

Power distribution boxes, or PDUs, are essential for efficiently distributing electrical power to various equipment and devices in industrial and commercial settings.





Distribution Box vs Control Box vs Junction Box: Key Differences and

What Is a Distribution Box? A distribution box, also known as a distribution board or panel, is the central unit that distributes incoming electrical power to various circuits. The primary role of a



Explore Power Distribution Box Types and Functions

In the distribution box, commonly known as the distribution board or breaker panel, you'll find several critical components responsible for managing

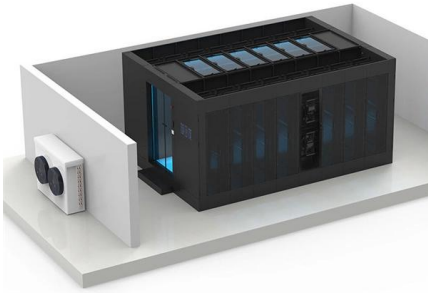
Understanding Distribution Boxes: A Comprehensive Guide

A distribution box, also known as a power distribution box or electrical distribution box, is used to distribute electrical power safely to multiple



Electric distribution box wiring tutorial (very simple and practical)

In this video, we are going to wire a power distribution box. This small box has an rccb switch that protects the outputs from electric shock and also has a miniature switch that protects the



What is an Electrical Junction Box and What Does it Do?

What is an electrical junction box and why is it important? Learn about the different types, sizing, uses, installation, and wiring of junction boxes.



Explore Power Distribution Box Types and Functions

Power distribution boxes are used in commercial and residential buildings and are part of the electrical system, also known as switchboards.

RJB

How is Relay Junction Box abbreviated? RJB stands for Relay Junction Box. RJB is defined as Relay Junction Box very rarely.





What is a Distribution Box? - A Comprehensive Guide

A distribution box organizes and controls power flow, ensuring safety and efficiency in electrical systems.

Understanding Distribution Boxes: Your Guide to Power

Distribution boxes, or electrical junction boxes as they are sometimes called, play a vital role in electrical systems. They act as the central location



What does a power distribution box do ?

The main function of the distribution box is to receive power and distribute it to various circuits. It can protect circuits, regulate voltage, and isolate and control

What Is a Distribution Box?

Some distribution boxes have a longer cord than others. When choosing a distribution box, make sure the cord is long enough to reach the main



What is an Electrical Distribution Box? A

When it comes to electrical safety, every building -- whether it's a cozy home or a sprawling factory -- needs a secure system to manage and



Distribution board

A distribution board (also known as panelboard, circuit breaker panel, breaker panel, circuit breaker, electric panel, fuse box or DB box) is a component of an electricity supply system that divides an



Difference between control junction box (cjb) and power junction box

Control Junction Box (CJB) and Power Junction Box (PJB) are both electrical components used in various applications. The main difference lies in their function: CJB is designed to control low power



How Does a Power Distribution Box Work

Learn how a power distribution box works step by step--from incoming power to circuit protection and smart monitoring--for safe, efficient electricity delivery.



Distribution Box: Types and Functions , Axis-Electricals

A distribution box ensures that electrical supply is distributed in the building, also known as a distribution board, panel board, breaker panel, or electric panel. It is

What Is a Distribution Box?

Distribution boxes are commonly used in residential and commercial electrical systems. Also known as a distribution board, it's responsible for



Distribution Box vs Control Box vs Junction Box: Key

What Is a Distribution Box? A distribution box, also known as a distribution board or panel, is the central unit that distributes incoming electrical



Contact Us

For datasheets, pricing, or custom telecom energy solutions, please visit:
<https://www.koskolong.co.za>