



Adam Tas Corridor Energy

What is a mixed power supply in a distribution box





What is a mixed power supply in a distribution box



Power Distribution Box Essentials: Functions, Types

A power distribution box electrical captures electricity from the primary power supply and allocates it securely to different electrical circuits in a building

How Does a Power Distribution Box Work

Learn how a power distribution box works step by step--from incoming power to circuit protection and smart monitoring--for safe, efficient electricity delivery.



Distribution Box: Types and Functions , Axis-Electricals

A distribution box ensures that electrical supply is distributed in the building, also known as a distribution board, panel board, breaker panel, or electric panel. It is

Understanding the ATS Dual Power Distribution Box:

Discover the essentials of the ATS Dual Power Distribution Box, a pivotal component in low



voltage power solutions. This guide delves into its

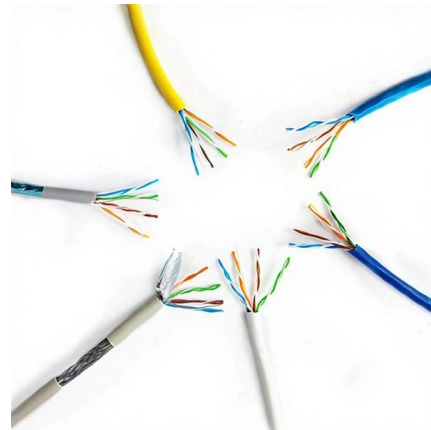


Distribution Box Guide: Types, Components & Solutions

Understand distribution boxes (DB boxes) in 5 minutes. Learn about types, components, functions, and uses. Find the perfect DB box for your needs.

The Complete Guide to Distribution Box: Installation, Types & More

The main switch, or main breaker, controls the entire electrical supply to the distribution box. This large switch allows you to disconnect all power to the building during emergencies or



Understanding Distribution Boxes:A Comprehensive Guide

Distribution Boxes: The most common type, used to deliver electrical power from the main supply to individual circuits in homes, offices, or factories.



What is a power distribution box?

What is a power distribution box? Sometimes referred to as a power distribution unit ('PDU') or simply a distro, a power distribution box is used to safely distribute electricity from the power source to other



What is a Distribution Box? - A Comprehensive Guide

Its primary function is to organize incoming power into subsidiary circuits, each safeguarded by a fuse or circuit breaker, allowing for easy control

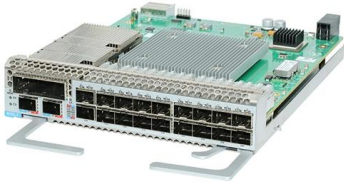
What is the Internal Structure of The Distribution Box

What is a Distribution Box? Definition A distribution box is an essential electrical component used to manage and control the flow of electricity



The Ultimate Guide to Distribution Box Types

In any electrical system, the distribution box is the heart and brain, a critical component that safely manages and distributes power from the main source to



What is an Electrical Distribution Box? A

When it comes to electrical safety, every building -- whether it's a cozy home or a sprawling factory -- needs a secure system to manage and



Length:33.5mm
Small-end inner diameter:4.0mm
Large-end inner diameter:6.0mm



Understanding Distribution Boxes: A Comprehensive Guide

Learn what a distribution box is, its types, and how to choose the right one for your project. Includes clear examples and expert tips.

What is a Distribution Box? - A Comprehensive Guide

A distribution box organizes and controls power flow, ensuring safety and efficiency in electrical systems.

LoRawan outdoor base station





Understanding Distribution Boxes:A Comprehensive Guide

Around this box, several circuits are attached. The main supply sends electricity to the box, which then distributes power to these smaller circuits

Distribution Boxes: Types and Functions

A distribution box (distribution board / DB box) receives incoming power from the mains supply and safely distributes it to multiple branch circuits. It



Ultimate Guide To Distribution Boxes Db Boxes Types

This ultimate guide explains what a distribution box does, its internal components, common types, real-world applications, and how to select the right DB Box for

Distribution Boxes: Types and Functions

With one input and several outputs, these boxes allow multiple devices to connect through the distro instead of directly to the power supply. This



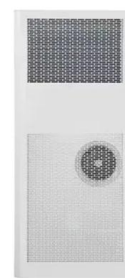
Power Distribution Boxes Explained Simply

Learn what a power distribution box is, how it works, key components, types, and why it's vital for safe and efficient electrical systems.



Three Phase Distribution Box Functions and

A three phase distribution box safely distributes and protects power for large equipment in factories, buildings, and high-demand commercial settings.



Distribution Boxes Explained: Types, Functions, and

Beyond simple power distribution, these units provide essential safety measures that protect against electrical hazards like short circuits and power



What Is an Electrical Distribution Box? A Complete Guide

An electrical distribution box is a centralized unit responsible for distributing electrical power across multiple circuits within various



Mixed-Signal Board Power Generation and Distribution

One of the most common applications of mixed signal design at the board level is board level power generation and distribution. The difficulties involved with designing proper board-level power supplies

Primary and secondary power distribution systems (layouts explained)

It integrates power distribution, protection, and monitoring capabilities, and is responsible for distributing power to entire commercial or residential buildings.





Cushman & Wakefield , Commercial Real Estate

A global commercial real estate services leader, we will never settle for the world that's been built, but relentlessly drive it forward..

A Definitive Guide To Distribution Boxes

The distribution box acts as the center of power distribution, distributing electricity to all connected devices. A distribution box, also known as a distribution board, panel board, breaker



2. Imported design is convenient for expansion.

The design of two inlets saves space and allows for rear line entry.



Power Distribution Boxes Explained Simply

Electricity enters the box from the main power line. Inside the box, the power is split into multiple circuits --each one leading to a different area, like your kitchen, workshop, or machine line.

Explore Power Distribution Box Types and Functions

Power distribution boxes are used in commercial and residential buildings and are part of the electrical system, also known as switchboards.



Contact Us

For datasheets, pricing, or custom telecom energy solutions, please visit:
<https://www.koskolong.co.za>