



Adam Tas Corridor Energy

What is bit error rate difference





What is bit error rate difference

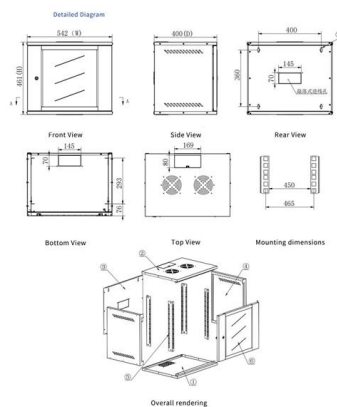


Bit Error Rate

The bit error rate is a measure of how many bits are received in error compared to those transmitted. Ideally if you send a stream of binary 'ones' and 'zeroes' down a link they will all arrive in

What Is Bit Error Rate? A Practical Guide

Bit error rate, often shortened to BER, is the proportion of received bits that do not match the bits that were transmitted. In plain English, it measures how often the message changes in



Bit Error Rate (BER) 101: Measuring Signal Quality in Digital Links

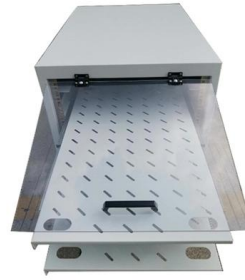
A lower BER indicates better signal quality, as it means fewer errors have occurred. For example, if 1,000,000 bits are transmitted and 100 bits are incorrect, the BER would be

Bit Error Rate 2026

Bit Error Rate Testers (BERTs): These devices generate a known bit sequence, send it over the network, and measure the sequence received



back against the original.



What Is BER (Bit Error Rate)? Measuring Signal Integrity

2. Transmission Medium: Different media, such as copper wires, fiber optics, or wireless channels, have varying susceptibilities to interference and attenuation, impacting BER. 3. Modulation

Bit error rate

The bit error rate (BER) is the number of bit errors per unit time. The bit error ratio (also BER) is the number of bit errors divided by the total number of transferred bits during a studied time interval.



What Is a Bit Error Rate (BER) and How Is It Calculated?

The calculation of the Bit Error Rate is a straightforward ratio: the number of erroneous bits received is divided by the total number of bits transmitted over a specific measurement interval.





Bit Error Rate (BER) - Definition, Formula, System Impact

Bit Error Rate (BER) quantifies the reliability of digital transmissions. Learn how it is calculated, how it impacts system design, and where it applies.



What is Bit Error Rate (BER) and why does it matter in communication

These errors manifest as distortions or alterations in the bit sequence, leading to potential misunderstandings or data corruption. The Importance of BER in Communication Systems BER is a

What Is Bit Error Rate? And What Is a Good Bit Error Rate?

As a key parameter for evaluating data transmission accuracy, the bit error rate directly determines the reliability and stability of communication systems. This article delves into the



Bit Error Rate Explained: How to Measure and Improve Digital Signal

Because raw error-counts don't tell the whole story: a high-speed link sending billions of bits will naturally see more raw errors than a slower link--but the BER lets you compare apples to



What is Bit Error Rate or BER?

Bit Error Rate (BER) is the number of bit errors per unit of time where bit errors refer to the number of received bits of a data stream that have been altered due to noise, interference,



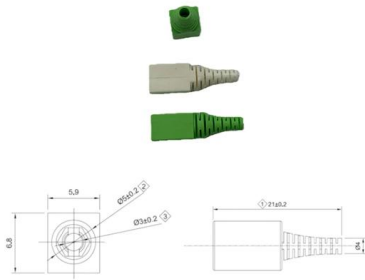
What is Bit Error Rate or BER?

BER is a measure of the number of erroneous bits received compared to the total number of bits transmitted in a data transmission system. It quantifies the accuracy of data transfer

BER (bit error rate)

Similarly, channel coding techniques that can correct or detect errors can improve the BER and provide better system performance. The BER is also





NICE AND EASY: What is bit error rate?

The real story about amplifiers and bit error rate
Amplifying a signal doesn't generally improve bit error rate and sometimes has a negative effect on

Understanding Bit Error Rate in Communication

Learn about Bit Error Rate (BER), its importance, and how it's used to measure the performance of digital communication systems.



What is Bit Error Rate? Understanding Digital Signal

Bit Error Rate is the indispensable metric for quantifying the fidelity of digital communication. A low BER is synonymous with reliability, performance,

What Is Bit Error Rate (BER)?

BER refers to the rate at which errors occur in a transmission of bit sequences over communication channels. As digital information travels from one point to another, several factors can compromise its



Modelling the Bit Error Rate (BER)

The difference varies not just by city but by country as countries have different spectrum authorities and regulate spectrum usage differently. The



Understanding Bit Error Rate in Optical Communications

Bit Error Rate (BER) is a critical performance metric in optical communications that measures the number of errors occurring in a transmitted data stream over a certain period.



Bit Error Rate Explained: How to Measure and Improve Digital Signal

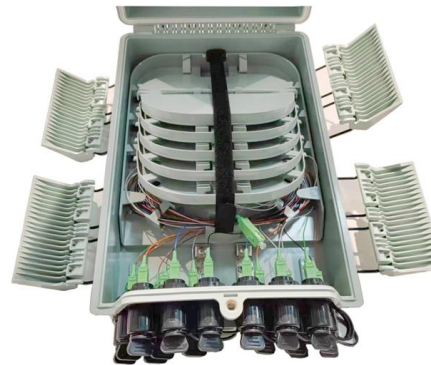
Understand what Bit Error Rate (BER) means, how it affects digital signal integrity, and discover practical ways to measure and reduce BER with LINK-PP high-speed connectivity solutions.





What Is Bit Error Rate? A Practical Guide

Discover how bit error rate helps evaluate digital link health, understand measurement methods, and learn strategies to reduce errors for optimal network performance.



Bit Error Rate (BER) Basics and Measurement Techniques

In essence, it's the ratio of incorrectly received bits to the total number of bits sent. To calculate BER, the received bits are compared to a known reference

Bit Error Rate Analysis of Digital Modulation Techniques in Wireless

However, this comes at the cost of the data rate since lower order techniques have lower data rates than their higher order counterpart. Furthermore, it was found that the performance in AGWN channel was



Bit Error Rate or Bit Error Ratio , Keysight

To find the bit error rate or bit error ratio of your system, you need a Bit Error Rate Tester or Bit Error Ratio Tester (BERT). BERT refers to a class of test equipment.



Contact Us

For datasheets, pricing, or custom telecom energy solutions, please visit:
<https://www.koskolong.co.za>