



Adam Tas Corridor Energy

What is the grid cable tray in the computer room called





Overview

The wire mesh cable tray is mainly used in the construction of the computer room, which plays a vital role in the protection of cables in the construction of the modern computer room, greatly reduces the cost and energy consumption, and is an indispensable wiring device for the. Cable tray systems are frameworks designed to support and organize network cables. They help keep cables off the ground, prevent tangling, and improve accessibility for maintenance or future upgrades. Cable pathway is the overarching term used to describe all types of overhead cable management systems.



What is the grid cable tray in the computer room called



Data Centre Cable Trays: High-Density Cabling Guide

Learn about Data Centre Cable Trays for high-density cabling. Get a guide on design, materials, smart management, & future tech for data halls.

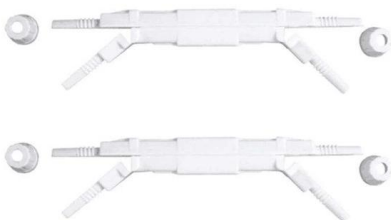
7 Types of Cable Trays: How to Choose the Right One

Wire mesh cable trays--often called basket trays --are constructed from welded steel wire, forming a lightweight open-grid structure. Unlike



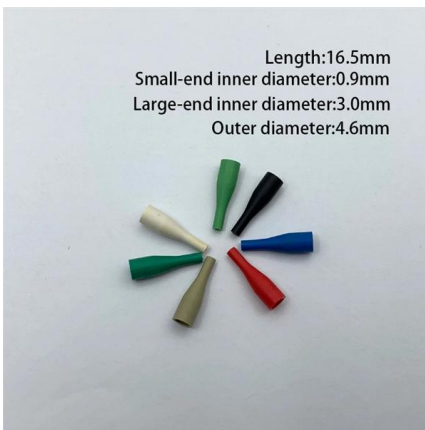
Types of Cable Trays - Purpose, Advantages,

Cable tray is alternatives to wire ways and electrical conduits, which completely enclose cables. Study types of cable trays, purpose, advantages.



What is a Network Closet?

A network closet could be a closet or a small room where electrical wiring and computer networking hardware is installed. Depending on



Computer Room Grommets & Cables Guide

Computer rooms are vital to many of today's workplaces, housing critical equipment and infrastructure. An essential aspect of modern computer

Grid Cable Trays and Fiber Optic Raceways

Need to manage cables? We explain grid cable trays and fiber optic raceways, their uses, benefits, and how they work together for better cable



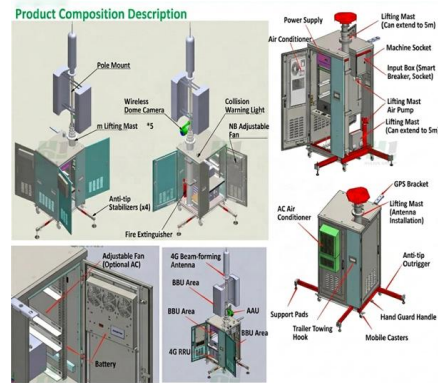
The Complete Guide to Cable Trays , Snake Tray

Learn about the benefits and applications of cable trays, and the specific advantages of using Snake Tray products.



Network Cable Tray Systems: Choosing the Best

Made from a grid-like structure, wire mesh trays are lightweight, flexible, and easy to install. They're ideal for offices that require frequent cable additions or modifications.



- IP65/IP55 OUTDOOR CABINET
- IP54/55
- OUTDOOR ENERGY STORAGE CABINET
- OUTDOOR BATTERY CABINET

Cable Tray vs Cable Basket vs Cable Ladder vs Cable

Also known as wire mesh trays, these are lightweight, flexible, and perfect for routing small cables or network wiring. Their open structure gives maximum airflow and

What is that hole in my desk for cable management called?

What is that hole in my desk for cable management called? Best answer: Essentially, the hole is just called a hole. However, the cool little plastic



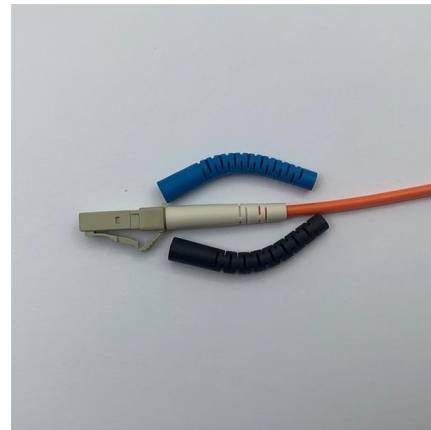
19-inch rack

A 19-inch rack is a standardized frame or enclosure for mounting multiple electronic equipment modules. Each module has a front panel that is 19 inches (482.6 mm)



Cable Tray Technical Guide A practical guide to product selection and

Cable tray is considered to be a system. It must provide continuous support for cables, and the electrical continuity of the cable tray system must be maintained.



How to Choose the Right Steel Cable Tray for Your IT

When it comes to organizing IT and electrical cables, selecting the right solution can feel like navigating a maze. Imagine walking into a server room,

Cable tray

A solid-bottom tray provides the maximum protection to cables, but requires cutting the tray or using fittings to enter or exit cables. A deep, solid enclosure for cables





Overhead Cable Management: Cable Runway vs. Cable

Ladder rack (also known as "ladder trays" or "cable ladders") are one of the most common types of cable runway. As the name suggests, they're

What is Cable Tray and How it is used in Industrial

A design engineer specifies a type of cable tray that suits the project, cable specification depends upon the industrial environment or situation where it



Network Cable Tray Systems: Choosing the Best

From assessing your space to selecting the ideal cable tray system, our team ensures a seamless and efficient installation process. Investing in the right cable

Types of Cable Trays - Advantages, Applications and Sizes

Explore the types of cable trays, their advantages, applications, and standard sizes. Learn how they improve cable management and support various industries.





The cable tray can be divided into grid type, ladder type, tray type

The wire mesh cable tray is mainly used in the construction of the computer room, which plays a vital role in the protection of cables in the construction of the modern computer room, greatly

Cable Ladder for Data Centers & Server Rooms

Cable ladder offers several advantages for cable management in data centers and server rooms, such as organizing cable routing, reducing the risk of cable



What are the main components of a cable tray?

Discover the main components of a cable tray system. Learn about tray types, fittings, supports, and accessories for effective cable management.

What Is The Grid Cable Tray Used in The Building?

There are three main types of grid bridge: stainless steel grid bridge, hot-dip galvanized basket cable tray, and galvanized grid bridge (also called



Underfloor cable systems explained in details

Ducts and risers, and within suspended ceilings are typical spaces where parts of so-called underfloor systems may be appropriately used. There are two main types of such systems:

Cable Trays and Their Uses: Definition, Types, and

Learn about cable trays for desks, accessories, and how they compare with raceways, conduits, and trunking for efficient cable management.



Overhead Cable Management: Cable Runway vs. Cable

Modern data centers could not survive without proper overhead cable management. Learn all about cable pathway systems such as cable tray & cable





Best practices for underfloor cable management

Modern data center designs must develop cable organization plans with considerations to account for day-to-day operation, operational efficiency of equipment, optimal performance, and the facility's



Essential guide for Cable Tray Installation in Data Centres

Getting Ready for Cable Tray Installation in Data Centres Doing a proper job starts before you even pick up a tool. Checking the Site and Making

Understanding Grid Cable Trays and Their Applications

Grid Cable Trays are metal structures designed to support and organize cables. Made from steel or aluminum, they allow proper airflow and easy



What are the main types of cable tray?

Introduce the main types of cable tray including ladder cable tray, perforated cable tray, solid bottom cable tray and wire mesh cable tray.



WyrGrid Overhead Cable Tray Routing System

The Wyr-Grid® Overhead Cable Tray Routing System reduces the number of individual components and labor required to create common connections. Fewer components and less labor equal a simpler



Contact Us

For datasheets, pricing, or custom telecom energy solutions, please visit:
<https://www.koskolong.co.za>