



Adam Tas Corridor Energy

What kind of junction box is best for an 8-core optical cable





What kind of junction box is best for an 8-core optical cable



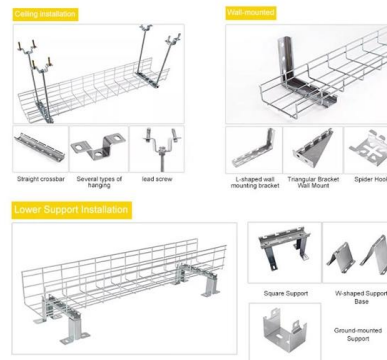
8 Core NAP ODP FTB FTTH 3 Inlet Fiber Access

The 8 port Fiber Distribution Box is sturdy in structure, lightweight in size, and

Wiring Diagram for Junction Boxes: Simplifying Electrical

Learn how to properly wire a junction box with this wiring diagram. Follow step-by-step instructions for a safe and efficient electrical installation.

INSTALLATION METHOD



Which Fiber Optic Junction Box is Best?

When it comes to fiber optic junction boxes, a variety of options are available. Usually, a common question asked by customers is which box is best for their application.



Understanding Fiber Optic Junction Boxes: A

A fiber optic junction box, also known as a fiber optic distribution box or termination box, is a



protective enclosure that facilitates the connection and



Indoor 8 Core Fiber Distribution Box for Optical Cable , CRXCONEC

Ideal for last mile FTTH deployments, this versatile 8 core fiber distribution box is perfectly suited for small-scale installations in apartments, residential, or commercial buildings, enhancing floor



How to choose the right fiber cores

For fiber-optic cables with branches, the total number of cores is equal to the number of branches multiplied by the number of cores per branch. For example, the total number of cores in an MTP®-8



Optical Distribution Box

Application Description: Optical Distribution Point ODP Box provides a connection point between distribution cables and drop cables at the subscriber access point





Essential Guide to Optical Cable Junction Boxes: Key Benefits & FAQs

Wall-mounted junction boxes: Ideal for indoor use, these boxes can be easily attached to walls for optimal space utilization. Pole-mounted junction boxes: Designed for outdoor installations, they can



Essential Guide to Optical Cable Junction Boxes: Key Benefits & FAQs

Ensure that the box is clean and that connections are secure to maintain optimal performance. Are optical cable junction boxes waterproof? Many junction boxes are rated for water resistance, but it's

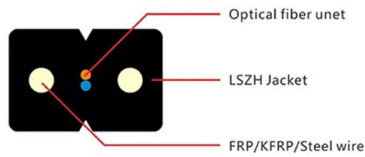
How to Choose the Right Optical Junction Box?

Choosing the right optical junction box is crucial for ensuring the performance, reliability, and longevity of your optical networks. With the increasing demand for high-speed internet and



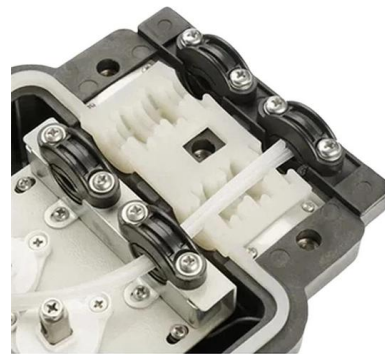
GINTOONYUN Fiber Optical Terminal Junction Box,4

Applications: Suitable for FTTH, FTTO, FTTD and local area network. This optical fiber terminal box can place FC, LC adapters. 4-Port Optical Fiber Desktop Box



Optical Cable Junction Boxes: Functions and Features

It is crucial that optical cable junction boxes have exceptional quality. They must be durable and able to withstand extremely high or low temperatures,



8-Core Optical Distribution Box FTTH SC Adapter

8-Core Optical Distribution Box FTTH SC Adapter
Material: ABS-FR, UV resistant, rain resistant
Fiber splicing, fixing, storage, distribution, etc. all in one Cable,

8 Core NAP ODP FTB FTTH 3 Inlet Fiber Access

8 port Optical Fiber Distribution Box Indoor / Outdoor Wall Mounted comes with 2 fiber cable ports + 8 ports for drop ftth fiber optic cables. It can install 8pcs





12 Port Fiber Access Terminal Box with 2 Cable Inlet For

The 2 ports fiber optic junction box allows max 12 cores splicing and 1x8 splitting, Widely used in residential, business buildings for cable distribution.

8 Port Fiber Access Terminal (FAT) with Mid-span Entry

The 8 Port Fiber Access Terminal (FAT) is designed to connect feeder cables to subscriber drop cables for FTTH last-mile fiber connectivity; it can achieve direct



8 Core Fiber Optic Termination Box

The MBN-FOSC-A18-8 is an outdoor 8 core fiber optic termination box designed to serve as a termination point for feeder cables connecting to drop cables within

Electrical Junction Box Types: Materials, Uses

Electrical junction boxes play a critical role in protecting wire connections, organizing circuits, and ensuring electrical safety in residential,



How Does an Optical Junction Box Work?

How an Optical Junction Box Works An optical junction box (OJB) is a crucial component in fiber optic networks, connecting various fiber strands and facilitating efficient data transmission.



Amazon : : All Departments

Online shopping for from a great selection at All Departments Store.



Optical Transceiver Manufacturer, 12 Core Vs 8 Core

Choosing between 12-core and 8-core MPO connections for 40G network cabling? This guide compares fiber utilization, insertion loss, density, and





How to Choose the Suitable Number of Fiber Cores for

Among their many features, the number of fiber cores directly affects data capacity and network performance. Understanding this key aspect is crucial



How to Routing a Fiber Core in Joint Box

In this video I will show you how to routing a fiber core in a joint box With the help of this video you can easily routing a fibers in your joint box and run your network without any optical

The Essential Guide to Junction Boxes: Types, Uses,

Unlock the essentials of junction boxes with Vorlane's guide on types, uses, and installation tips for safe and efficient electrical setups.



Contact Us

For datasheets, pricing, or custom telecom energy solutions, please visit:
<https://www.koskolong.co.za>