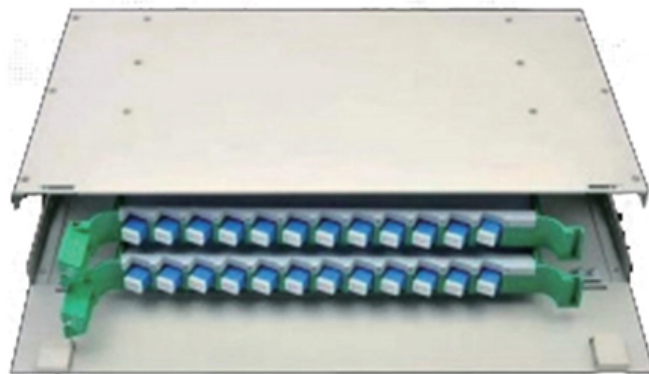




Adam Tas Corridor Energy

What s going on with the cable terminal box





What s going on with the cable terminal box

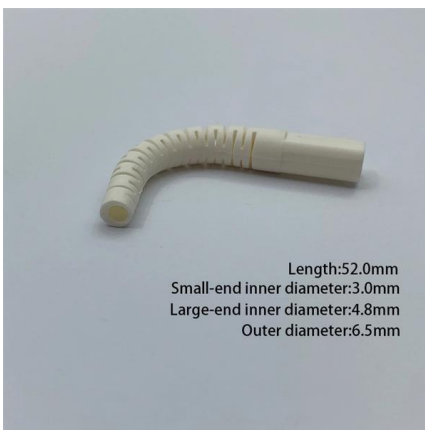
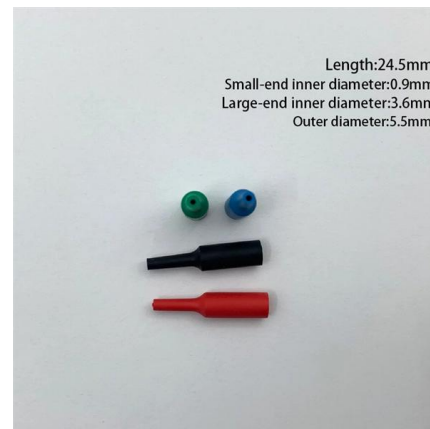


The Ultimate Guide to Terminal Junction Box Wiring:

Learn how to properly wire terminal junction boxes for electrical connections. Understand the importance of proper wiring techniques, safety precautions, and

What is Fiber Termination Box

A Fiber Termination Box (FTB), also known as an Optical Terminal Box (OTB), is a crucial component in Fiber to the Home (FTTH) applications. Its



Problem analysis of optical fiber terminal box

The box serves as a junction point for incoming and outgoing fiber-optic cables, and can also include components such as splices, adapters, and splitters. In this article, we will explore the

Fiber ONT Troubleshooting , BroadbandSearch

Optical Network Terminal (ONT) troubleshooting guide: Tackling common glitches, step-by-step



fixes, and preventive care for fiber-optic internet.

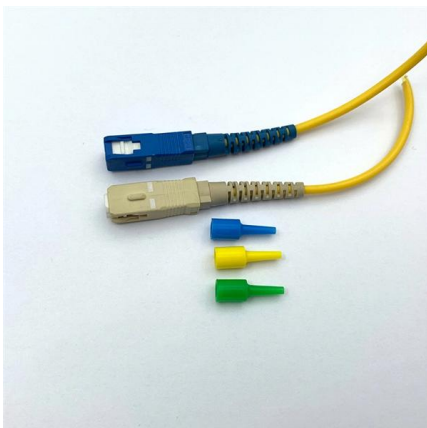


What is Fiber Termination Box?

Fragile optical cables are prone to bending, tangling, and environmental stress, especially in FTTH and FTTO deployments. To address

FS Community

Hier sollte eine Beschreibung angezeigt werden, diese Seite lässt dies jedoch nicht zu.



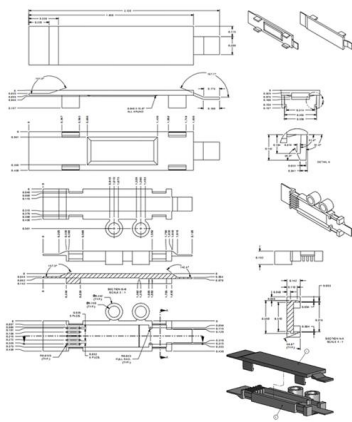
What is the Difference Between a Terminal Box and a

Definition and Purpose A terminal box, also known as a fiber optic terminal box or FTTH (Fiber to the Home) terminal box, is a compact enclosure



what is a terminal box

Definition of junction box A junction box, also known as a wire box or terminal box, is a closed container used to fix, protect and connect wires and

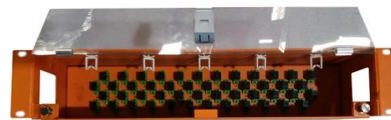


Fiber Terminal Box vs. Junction Box: What's the Difference?

Learn the difference between a fiber terminal box and a fiber junction box, including functions, applications, capacity, and installation scenarios. ZION Communication provides a

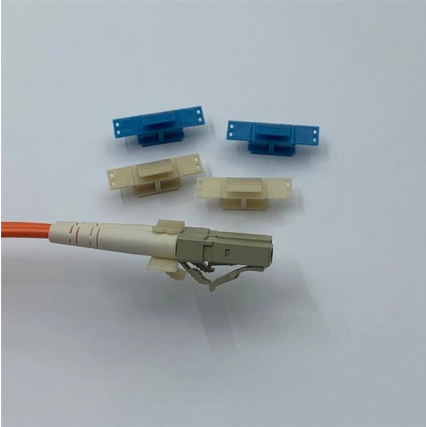
Fiber Terminal Boxes: What They Are and Why You

Once the terminal box is installed and the cables are connected, test the network to ensure it is functioning properly. Use a fiber optic testing kit to



What is the fiber optic terminal box?

A fiber optic terminal box, or fiber terminal box (FTB), is an essential device in fiber optic networks for terminating and managing fiber optic cable connections. It is compact, designed for both



Fiber Optic Terminal Box Guide: Choosing the Right

Discover how to select the best fiber optic terminal box for data centers, campus fiber backbones, outdoor FTTH networks, and enterprise fiber



20mm Galvanised 1 Way Terminal Conduit Box - BS EN

20mm galvanised 1 way conduit terminal box - corrosion resistant, BS EN 50086 compliant, malleable iron. Ideal for end-of-line wiring. Lid sold separately.

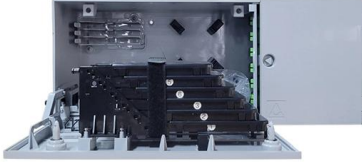
101 Guidelines for Fiber Termination Box

To address this problem, the fiber termination box (FTB) was created to protect the fragile fiber terminals and provide a simple and clear way to





All You Need To Know About Fiber Termination Boxes:



In network cabling, outdoor connections generally use fiber optic cables. When these optical fibers are installed or laid out, a Fiber Termination

What is Fiber Termination Box?

The fiber termination box plays a vital role in delivering reliable, well-organized, and scalable optical connectivity. From homes to government facilities, its deployment ensures the



What are these boxes on the poles? : r/FiberOptics

The old copper network that's being replaced by that roll of fiber. That's a Western



What is a Fiber Terminal Box?

One essential component in this management system is the fiber terminal box. This article explores what a fiber terminal box is, its functions, types,



5 Fiber Termination Box Knowledge You Must Know

The fiber optic terminal box can be used for the distribution and terminal connection of various fiber systems and is particularly suitable for micro

Fiber Terminal Boxes: What They Are and Why You

A fiber terminal box, is a device used in fiber-optic communication networks to terminate, splice, and distribute optical fibers. It is a small enclosure



What is a Fiber Termination Box and How is It Used?

Fiber Termination Box is a device used for fiber optic network terminal access and management. It offers higher reliability and more flexible deployment





What is Fiber Termination Box

Its primary function is to efficiently manage and terminate fiber optic cables, connecting the cable's core to a pigtail. This guide will provide an in-depth



**REINFORCED VIRGIN
PVC TRUNKING**

Superior Crush Resistance



ISO 9001
ROHS
DNV GL

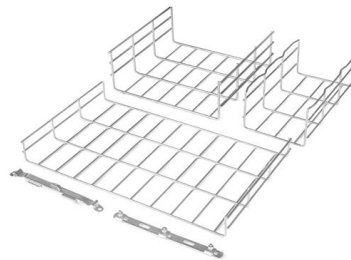
 37.6MPA Tensile Strength	 2856MPA Elastic Modulus
 9.8KJ/M² Impact Strength	 1.54G/CM Density

Google Translate

Google's service, offered free of charge, instantly translates words, phrases, and web pages between English and over 100 other languages.

Google Übersetzer

Mit diesem kostenlosen Google-Dienst lassen sich Wörter, Sätze und Webseiten sofort zwischen Deutsch und über 100 Sprachen übersetzen.



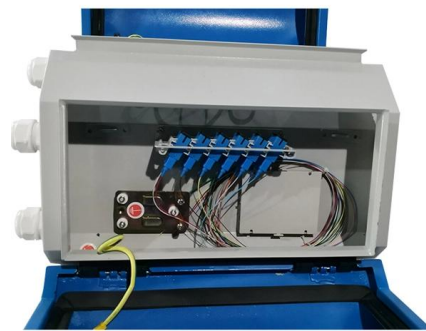
What is the purpose of a terminal box?

First and foremost, a fiber optic terminal box serves as a robust protective shield for fiber optic cables and their delicate connections. Fiber optic cables, composed of ultra thin glass or plastic



What is an Optical Fiber Terminal Box

By operating the terminal box, optical fiber network faults can be quickly located and resolved. In short, as a key device in the deployment of



All You Need To Know About Fiber Termination Boxes:

Then, the optical cable core and pigtail are welded in the terminal box. These boxes are similar to MDF in telephone exchanges. There are cassettes

What is the fiber optic terminal box?

It serves as a central point where main fiber cables are terminated and then distributed into individual fibers or smaller cables.





Contact Us

For datasheets, pricing, or custom telecom energy solutions, please visit:
<https://www.koskolong.co.za>