



Adam Tas Corridor Energy

Where to connect the wiring in the distribution box when the circuit breaker trips





Overview

Wiring Direction: Wiring between the main circuit breaker and each branch circuit breaker in the box generally goes on the left, and the wiring out of the distribution box generally goes on the right. To understand how a breaker box works, it is helpful to have a wiring diagram that shows the connections between the various components. Correct wiring methods for circuit breakers within distribution boxes are fundamental to ensuring electrical safety and compliance with established codes. This diagram illustrates some of the most common circuits found in a typical 200 amp circuit breaker service.



Where to connect the wiring in the distribution box when the circuit



Breaker Box Wiring: How Is It Done? Your Questions

How does breaker box wiring work? How to safely run cables to electrical boxes? Find the answer to these and other related questions in our

Wiring a Breaker Box

Wiring a breaker box is a highly technical skill--knowing how it operates isn't. Take some of the mystery out of those wires and switches that lurk



Distribution Box Wiring Steps

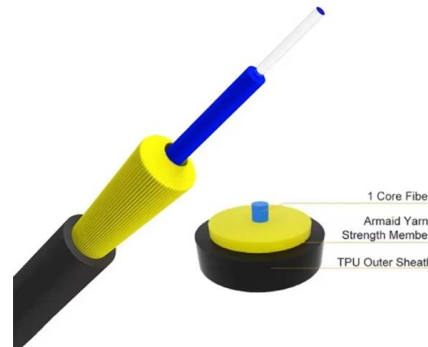
?Wiring Direction?: Wiring between the main circuit breaker and each branch circuit breaker in the box generally goes on the left, and the wiring out of

The Complete Guide to Distribution Box: Installation, Types & More

Circuit additions are possible if the distribution box has adequate capacity and available spaces.



However, you must ensure the total load doesn't exceed the box's rating and that all



The Ultimate Guide to Circuit Breaker Wiring

Master the safest and most efficient circuit breaker wiring configurations. Learn about single-phase vs. three-phase setups, safety standards, and future-proof electrical

Electrical Panel Box: Anatomy & How It Works , Penna

An electrical panel box or breaker box controls the entire electricity in your home, so it's important to know its components and how it works.



How to Wire an Electrical Circuit Breaker Panel

Learn how an electrical circuit breaker panel is installed. Normally this is a job that should be attempted only by a licensed



Circuit Breaker Box Wiring: How to Wire a Circuit

This guide will cover everything you need to know about circuit breaker box wiring, including diagrams, procedures for wiring various types of circuit

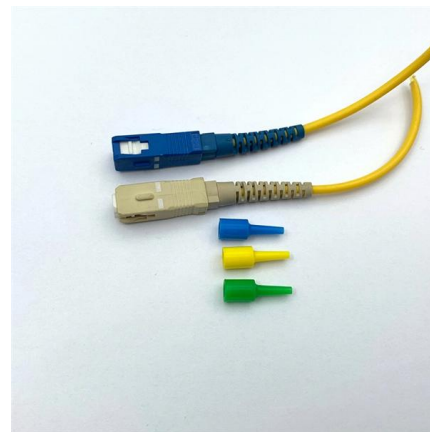


A guide to understanding home breaker box wiring

Learn how to read and understand a home breaker box wiring diagram to ensure the safety and functionality of your electrical system.

Understanding Distribution Boxes: A Comprehensive Guide

A distribution box, also known as a power distribution box or electrical distribution box, is used to distribute electrical power safely to multiple



MCB Box Full Wiring Connection Explained , Inverter to Main Line , A

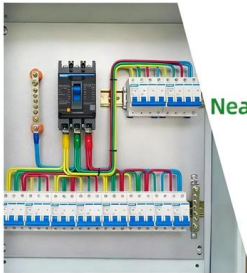
In this video, we're diving deep into the complete wiring connection of an MCB box -- from A to Z. Whether you're an electrician, a student, or a DIY enthusiast, this step-by-step guide will



DETAILS DISPLAY



Focus On Every Detail



01

Neat & Clean Layout



Cleaner arrangement of components, Easy to operate

How To Connect A Distribution Box

Learn how to connect a distribution box with this easy-to-follow, step-by-step guide. From tools and materials needed to common installation mistakes and solutions, this comprehensive article will



Distribution Box Wiring Steps

?Wiring and Binding? ?Wiring Direction?: Wiring between the main circuit breaker and each branch circuit breaker in the box generally goes on the left, and

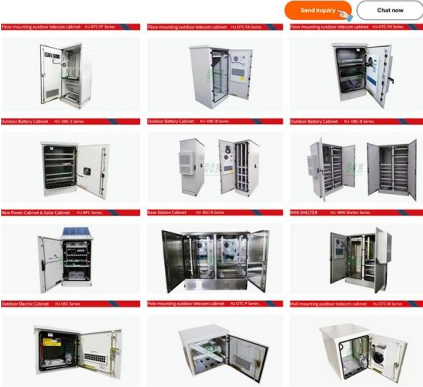
Circuit Breaker Installation: How to Add a New Circuit

Circuit Breaker Installation: Know What You're Getting Into We believe in safe DIY. That's why we've always been reluctant to show readers how to open





Powerful manufacturers · 20+ years of experience · Support customization
For more product types, please contact customer service>>>



A step-by-step guide to wiring your breaker box

Summary Reading and interpreting a breaker box wiring diagram is a valuable skill for electricians and homeowners alike. By understanding the key components,

Simplified wiring diagram for a single phase breaker box

When it comes to wiring a single-phase breaker box, it's important to understand the process and ensure everything is done correctly. A breaker box, also known as a

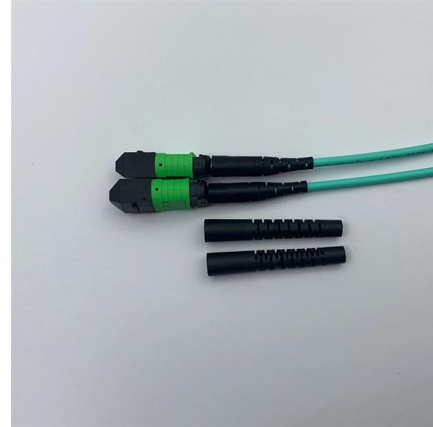


Distribution Box Installation: A Complete Guide to Safe

The distribution box, often referred to as a breaker box, fuse box, or electrical panel, is a critical component of any electrical system. It acts as the central hub for

Understanding Circuit Breaker Wiring Configurations in

Live (L) Wire Connection: In a distribution box setup, the incoming live wire (also known as phase or hot wire, denoted as L or Line) connects to the line



How to Wire a Home Distribution Box

Circuit Breaker is a device like a fuse which makes and breaks the circuit. In other words, Circuit Breaker is a device which switch ON and OFF



Breaker Box Wiring , How to Wire a Main Circuit Breaker

Technical Guide on How to Wire the Main Circuit Breaker Panel. See the step you need to follow for Breaker Box Wiring or Service Panel Wiring.



A step-by-step guide to wiring your breaker box

Learn how to read and understand wiring diagrams for breaker boxes to ensure proper electrical configurations and safety measures.





11 Steps For Electrical Circuit Breaker Panel Wiring

Learn how to safely and efficiently wire an electrical circuit breaker panel with this comprehensive 11-step guide. Cover essential tools, safety precautions, and step-by-step instructions to ensure proper



How to Wire a Breaker Box in 12 Steps

Although wiring a main breaker box is a job that's better left to a pro, this guide will show you how to wire a breaker on your own, from box start to finish.

Circuit Breaker Wiring Diagrams

It is connected to the grounding terminal on the receptacle and the ground bar in the breaker box. The other cable wires are connected as with any other branch circuit



Distribution Boards

Distribution boards, often referred to as electrical panels or breaker boxes, serve as the nerve center of any electrical system. Here we explore the crucial parts of a distribution board and gain insights into



Circuit Breaker Box Electrical Connections Guide

Learn how to correctly connect and set up your circuit breaker box with a clear, step-by-step guide for wiring and electrical safety.



on video How to Wire a Home Distribution Box

How to Wire a Home Distribution Box - Step-by-Step , Distribution DB box wiring diagram
Welcome to our channel! In this video, we'll walk you through the

Understanding Circuit Breaker Wiring Configurations in

Correct wiring methods for circuit breakers within distribution boxes are fundamental to ensuring electrical safety and compliance with established codes.





Contact Us

For datasheets, pricing, or custom telecom energy solutions, please visit:
<https://www.koskolong.co.za>