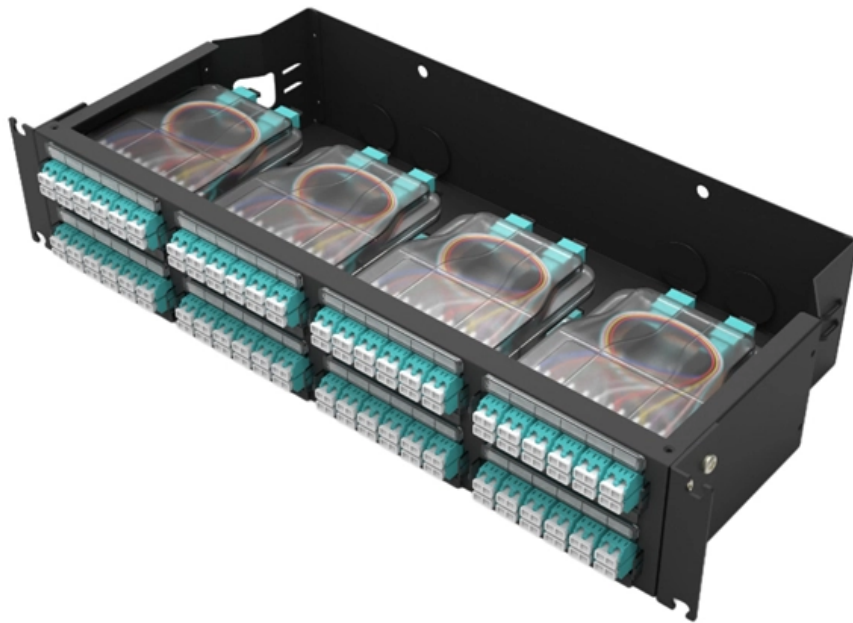




Adam Tas Corridor Energy

Where to put the electrical distribution box in a two-story self-built house





Overview

Choose the right box based on environment (indoor/outdoor), load capacity, and durability. When electricity is required to be distributed in one or more than one storey building, in this situation mostly a separate energy meter is installed on the ground floor for each floor. The supply wires from every energy meter are ejected and carried to the distribution fuse board of every floor. • HOUSE WIRING In this video, we will look into the intricacies of how to distribute electrical power safely and professionally in a multi-storey building.



Where to put the electrical distribution box in a two-story self-built



The installation requirements for the distribution box

Learn how to install a distribution box safely and correctly. Covers wiring, placement, standards, and expert tips for a compliant setup.

Where Is the Distribution Box Located and How to Find It

Learn where distribution boxes are typically located in homes and get step-by-step instructions for finding your electrical panel. Includes safety tips and



How to Distribute Power in a Multi-Storey Building , Complete

Whether you're an electrical engineer, a student a homeowner or an enthusiast looking to enhance your knowledge, this video offers a practical guide to power distribution in large buildings.

Power distribution inside large buildings , EEP

Distribution systems In large buildings the type of distribution depends on the building type,



dimension, the length of supply cables, and the loads.



Where is the best place to put a Electrical distribution box?

The box should be located in an area where it can accommodate the necessary wiring and circuit breakers to handle the electrical load of the system. Essentially, the location should be

Not Sure Where Outlets Go? Two-Storey House Electrical Layout Plan

Plan a two storey house electrical layout: place outlets by appliances, set switch points near doors, and size circuits for each room.



Not Sure Where Outlets Go? Two-Storey House Electrical Layout Plan

Creating an effective electrical layout plan for a two-storey house is crucial for functionality, safety, and comfort. This plan should include the placement of outlets, light switches,



How to Distribute Power in a Multi-Storey Building , Complete

o HOUSE WIRING In this video, we will look into the intricacies of how to distribute electrical power safely and professionally in a multi-storey building.

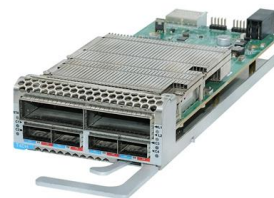


How to Install a Distribution Box in Singapore?

Are you looking to Install a Distribution Box in your home or office? Whether you're upgrading your electrical system or building a new property, installing a

Single Phase Electrical Wiring installation in a Multi

In today electrical wiring installation tutorial, we will show how to wire a single Phase Consumer Unit Installation in a single-storey building from Utility Pole to a 1



How To Run Electrical Wire In Two Story House

Fortunately, there are simple techniques and materials that anyone can use to run electrical wire through a two-story house



How To Run Electrical Wire In Two Story House

Fortunately, there are simple techniques and materials that anyone can use to run electrical wire through a two-story house safely and effectively. In

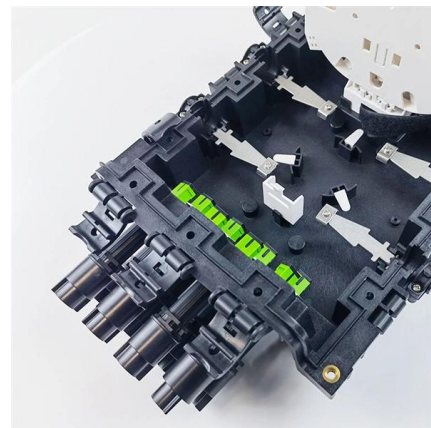


Power Distribution Boxes Explained Simply

Learn what a power distribution box is, how it works, key components, types, and why it's vital for safe and efficient electrical systems.

The installation requirements for the distribution box

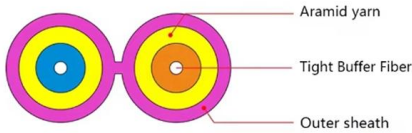
A distribution box is the heart of any electrical system. It takes the incoming power and safely distributes it to different circuits throughout your





A Step-by-Step Guide to Wiring an Electrical Panel Box

Find out how to properly wire an electrical panel box with a comprehensive diagram and step-by-step instructions.



Distribution of Electricity in Multi-Storey Building

They must always be enclosed in any specific iron or wood made cabinets and installed at a reasonable height, so that children cannot reach them.



Distribution Board Wiring Guide , Consumer Unit Layout

A distribution board (commonly called a consumer unit in domestic installations) is the central point where the incoming electrical supply is split into individual circuits that serve different

How to Choose a House Distribution Box , CHINT global

A well-chosen distribution box ensures the safety and efficiency of your household electrical system. This article guides you through selecting a



Eventbrite

Find tickets to your next unforgettable experience. Browse concerts, workshops, yoga classes, charity events, food and music festivals, and more things to do.



How To Wire A Separate Building To A House's

If you've built a home extension or want to convert a detached garage or shed, you'll need to consider how to supply these spaces with electricity. One



Where Is the Distribution Box Located and How to Find It

Knowing where your distribution box is located and how to access it safely puts you in control of your home's electrical system. Whether you need to



Electrical Wiring Distribution System in A Multi Story

Electrical Wiring Distribution system in a Multi Story Building - Free download as PDF File (.pdf) or read online for free. Electrical Wiring Installation Distribution



Three Phase Electrical Wiring Installation in a Multi

In today electrical wiring installation tutorial, we will show how to wire a Three Phase Consumer Unit Installation in a multi-storey building from Utility Pole to a 3-Phase

Distribution Box Installation: A Complete Guide to Safe

The distribution box, often referred to as a breaker box, fuse box, or electrical panel, is a critical component of any electrical system. It acts as the central hub for



Rewiring Electrical for Two-Story House - What You

We address many of the near-impossible (extremely difficult) tasks electricians come across when rewiring electrical for a two-story house.



Contact Us

For datasheets, pricing, or custom telecom energy solutions, please visit:
<https://www.koskolong.co.za>