



**Adam Tas Corridor Energy**

# **Which is better fiber optic cable or aggregation switch**





## Which is better fiber optic cable or aggregation switch

---



### Access Layer vs Aggregation Layer Fiber Equipment Guide

A comprehensive comparison of access layer and aggregation layer fiber optic network equipment, covering switch selection, SFP module matching, fiber interface types, port density planning, and

### Build a 10Gbps Fiber Network Between Buildings , SFP+ Switch, PoE,

This video shows you how to build a 10Gbps fiber optic network between buildings using PoE+ switches, SFP+ transceivers, and link aggregation for even higher speeds (up to 40Gbps!).



### MPO vs LC Fiber: When to Use Aggregation Assemblies vs Patch

Learn when to use MPO aggregation assemblies vs LC patch cables in high-density data centers. A practical guide for system integrators on scalability, compatibility, and performance.

### Fiber vs. Cable: Which Internet Type Is Best + Pros and

Compare fiber vs. cable internet speeds, reliability, and costs to find the best network



connection type for your needs. Learn the pros and cons in this guide.



### **In-depth analysis: What is an aggregation switch?**

In many network constructions, we have all heard of switches. So do you really understand switches? Why are aggregation switches often overlooked?

### **Link Aggregation Explained for Robust Networks**

Link Aggregation combines multiple physical links into one logical connection for higher throughput and redundancy.



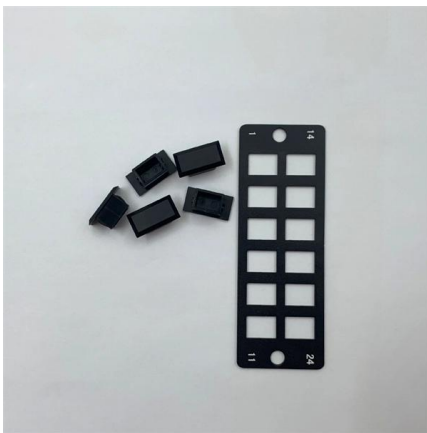
### **Aggregation Switch**

An Aggregation or "Top-of-Rack" switch is designed to connect everything in a rack at high speeds, then have an even bigger pipe out to the rest of the network.



## All you need to know about fiber aggregation points

Fiber aggregation is the process in which individual fiber optic cables are consolidated into a single, high-capacity cable. This improves the efficiency of



## Can You Use Fiber Optic Cable with RJ45? , Fiber vs

RJ45 and fiber optic cables transmit data differently--electrical vs optical. Learn why they are not directly compatible, how to connect Ethernet to fiber.

## What Is an Aggregation Switch and How to Choose?

An aggregation switch is a network device that consolidates traffic from multiple access switches, wireless access points, or other edge devices and



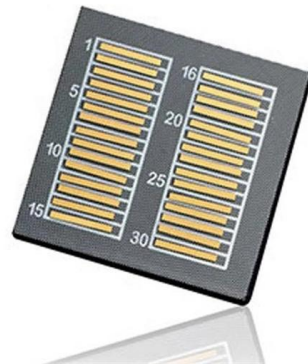
## Building a smarter network using fiber optic aggregation switches

For high bandwidth optical transmission, fiber optic aggregation switches focus more on performance, while for hybrid environments, distributed switches may be more versatile.



## MPO vs LC Fiber: When to Use Aggregation Assemblies vs Patch Cables

Learn when to use MPO aggregation assemblies vs LC patch cables in high-density data centers. A practical guide for system integrators on scalability, compatibility, and performance.



## sfp aggregation switch

SFP aggregation switches offer significant advantages in terms of scalability, flexibility, cost-effectiveness, and simplified network management. Organizations across various industries can

## What Is an Aggregation Switch and How to Choose?

So, what exactly is an aggregation switch, and how do you choose the right one? Let's examine it in detail.





## How Are Network Switch Connect To Fiber

Learn how network switches connect to fiber optics for fast and reliable data transmission. Understand the benefits and considerations of this

## Online Bulk Cable Company , CableWholesale

As a premier online bulk cable company, CableWholesale carries a large inventory of computer cables, USB, HDMI, fiber optic, VGA cables, and more. Shop now!



## Are multiple pairs of fiberoptic cable better for connecting switches

I have 2 - Cisco SG300-52MP 52-Port Gigabit PoE Managed Switches in 2 different buildings that I have connected together with fiberoptic cable to sfp ports. First, I ran with 1 pair

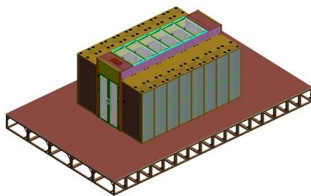
## Why You Need a Fiber Aggregation Switch and How it

According to trusted sources, fiber aggregation has many benefits, such as better performance and better demands. Network administrators can



## Instantly Upgrade Your Network with the Best Fiber

Finding the best switch for your fiber optic network can be a daunting task. However, with reviews and technical specifications, you can easily find what



## Core, Aggregation, or Access Switches? Choose the

Discover the crucial differences between core, aggregation, and access switches. Find out which type can best transform your network's



## AXIS D8308 Fiber Aggregation Switch , Axis

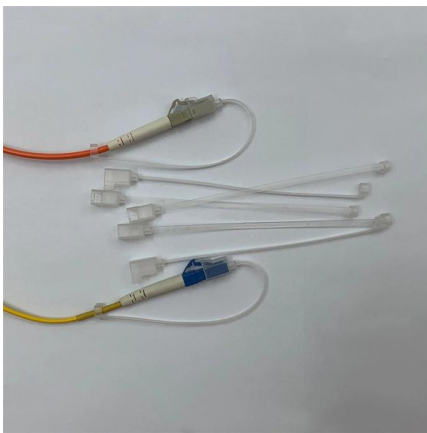
With AXIS D8308 Fiber Aggregation Switch you can connect multiple Axis devices using fiber midspans over long distances. It also enables easy expansion by





## 8 Fiber Port & 2 UTP lan port Fiber optic ethernet switch

Multi-gigabit optical aggregation series is my company based independent software research and development from a fiber aggregation switches, which have 8 \*



## Everything You Need to Know About Aggregation Switch

With an aggregation switch, traffic from multiple access switches is combined and streamlined, leading to better network performance and reduced

## Fiber Optic Transceivers: A Practical Guide for Network

What are Fiber Optic Transceivers? Fiber optic transceivers are electro-optical devices that convert electrical signals used by network equipment



## What Is an Aggregation Switch and How to Choose?

An aggregation switch is a network device that consolidates traffic from multiple access switches, wireless access points, or other edge devices and forwards it to



## Fiber vs. Cable Internet: Compare Options and Providers

Fiber vs. Cable: Compare the benefits and differences between fiber optic and cable internet. Explore speed, reliability, and performance factors to



## Understanding Switch Aggregation: A Comprehensive

QSFPTEK: How to Choose the Best Aggregation Switch?: This source provides a comprehensive guide on choosing the best aggregation switch,

## All you need to know about fiber aggregation points

Fiber aggregation points are centralized locations within fiber optic networks where lower-speed fiber links are combined into higher-capacity cables





## **WORLD WIDE WEB JOURNAL Home**

O'Reilly & Associates, Inc. 103A Morris St.  
Sebastopol, CA United States



## **Contact Us**

---

For datasheets, pricing, or custom telecom energy solutions, please visit:  
<https://www.koskolong.co.za>