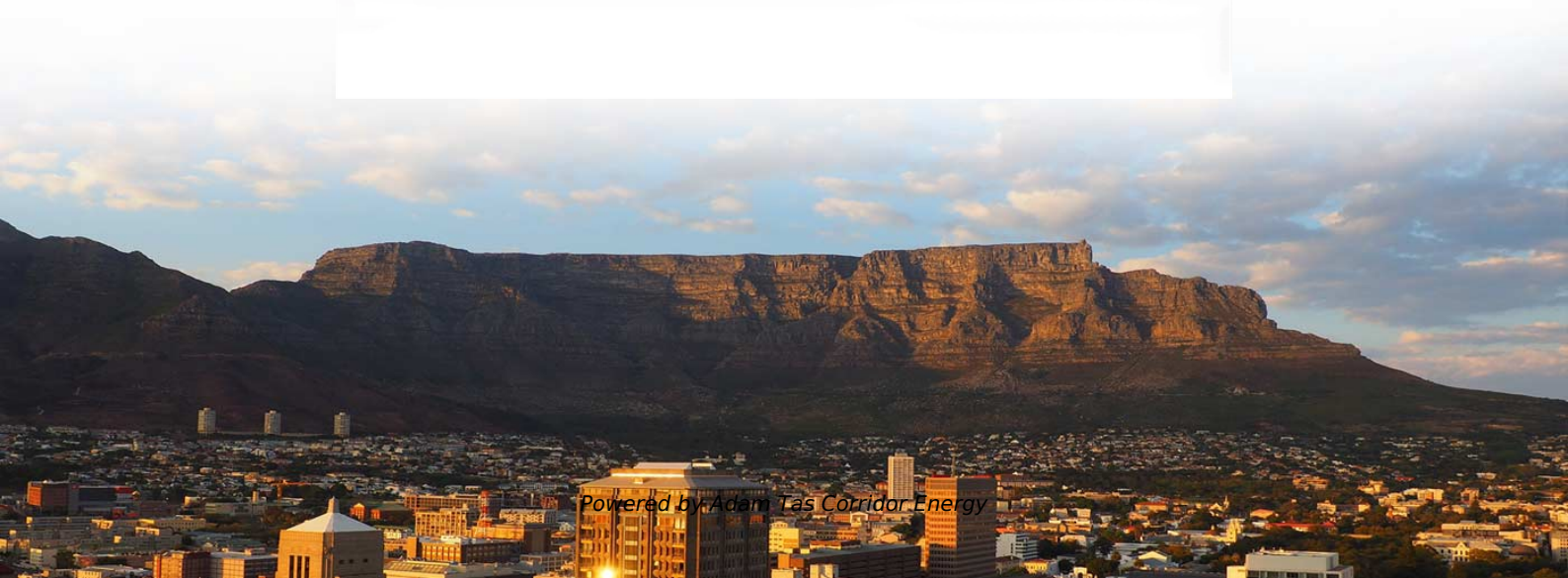




Why does the optical attenuation of the beam splitter increase



- Fine workmanship
- High-quality chip





Overview

In its most common form, a cube, a beam splitter is made from two triangular glass which are glued together at their base using polyester,, or urethane-based adhesives. Beam splitters are optical devices that play a crucial role in various scientific and industrial applications. This division allows for the simultaneous analysis or utilization of the light's properties along two separate paths.



Why does the optical attenuation of the beam splitter increase

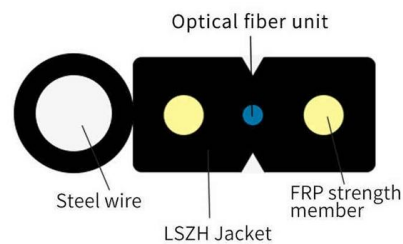


Flyriver: Understanding the Beam Splitter: Principles, Applications

The beam splitter is a fundamental optical component used to divide a beam of light into two or more separate beams. This seemingly simple device plays a crucial role in a wide variety of scientific and

What is a Beam Splitter: Types And Applications -

A beam splitter is a device used to separate or combine light. It is widely used in guiding light in optical systems, enhancing imaging and



Fundamental properties of beamsplitters in classical and

We use elementary laws of classical and quantum optics to obtain general relations among the magnitudes and phases of these probability amplitudes.

How Does a Beam Splitter Work in Optical Applications?

A beam splitter divides a light beam into two or more paths, crucial for optical devices like



microscopes and interferometers.



Chapter 19 Beam Splitter

In this example, we consider the incidence of a polarization entangled state on the beam splitter and assume that the beam splitter is polarization insensitive.



An Introduction to beam splitter

A beam splitter is an optical element that splits incident light into two beams of the same wavelength or two beams of different wavelengths. It is also possible to



How to Select a Beamsplitter

How to Select a Beamsplitter Beamsplitters are used in laser systems, optical interferometry, fluorescence, and biomedical instrumentation. They come in three basic forms: plate, pellicle, and



How Beamsplitters Work: Principles and Applications

While plates are lightweight and introduce minimal optical path length, the substrate thickness can cause a slight lateral shift in the transmitted beam and potentially introduce "ghosting"



Optical Splitters in Modern Networks

Fiber optic splitters, also referred to as optical splitters, fiber splitters, or beam splitters, are integrated waveguide optical power distribution devices that

What Are Optical Beam Splitters?

What Are Optical Beam Splitters? Key Takeaways Beam splitters, essential for applications such as teleprompters and holograms, have different types that play



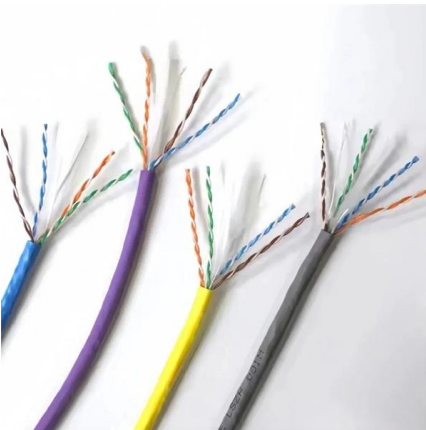
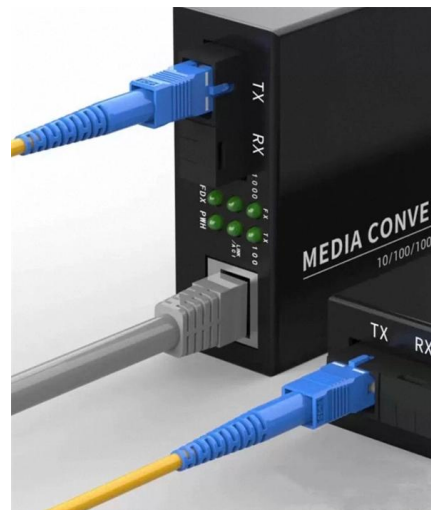
Beam Splitter

A beam splitter is defined as an optical device that divides and recombines an optical beam of light, typically using half-silvered mirrors that reflect approximately 50% of the incident energy while



Fundamental properties of beam-splitters in classical and quantum optics

Chapter 5, section 1, describes the properties of beam-splitters and their application in quantum-optical experiments. Quantized radiation states and photons are the subject of chapter 4, section 6.



Beam Splitter , Precision, Applications & Design Principles

One major issue is the inherent loss of light intensity, which can affect the efficiency of the system in which the beam splitter is used. Innovations in

Your Go-to Guide to Optical Splitter

The optical splitter is an optical power distribution device that splits one optical signal into multiple optical fiber signals to achieve multichannel transmission.

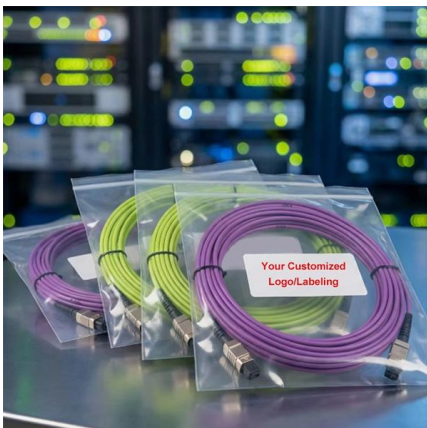


The Ultimate Guide to Optical Signal Attenuation

Introduction Optical signal attenuation is a fundamental limitation in optical communication systems, affecting the quality and reliability of data transmission. As the demand for

How Does a Beamsplitter Work? , Cube vs. Plate Comparisons

A cube beam splitter has a significant advantage over a plate beamsplitter because ghost images are not produced by the former. Furthermore, cubes allow users to employ a shorter optical path length



Transmission and Reflection by Beamsplitters

Plate beamsplitters have some advantages when compared to cube beamsplitters, primarily the lack of an optical cement in the vicinity of the dielectric or metallic



How Beamsplitters Work: Types, Mechanisms, and

Beamsplitters are optical devices able to either split an incident light beam into two separate beams or combine two incoming beams from distinct

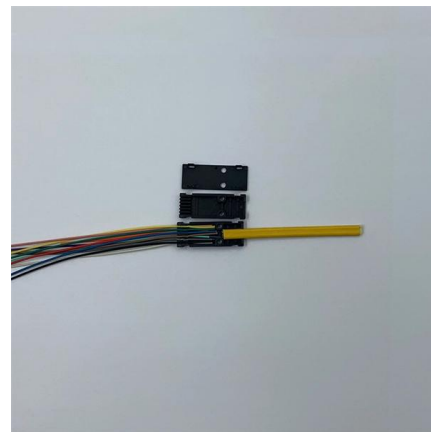


How beam splitters affect signal attenuation and polarization

In the context of beam splitters, attenuation can occur due to several factors, including absorption, reflection, and scattering. When a beam splitter divides the incoming light, some of the

Beamsplitter Guide

Beamsplitter Overview Beamsplitters separate incident light into two or more beams of the same wavelength. These exiting beams are differentiated by either their optical power (non



How Do Optical Beam Splitters Work & Applications

Current optical technology heavily utilized optical beam splitters because they deliver exact light control in multiple applications.



Beam splitter

Overview
Designs
Phase shift
Classical lossless beam splitter
Use in experiments
Quantum mechanical description
Reflection beam splitters

In its most common form, a cube, a beam splitter is made from two triangular glass prisms which are glued together at their base using polyester, epoxy, or urethane-based adhesives. (Before these synthetic resins, natural ones were used, e.g. Canada balsam.) The thickness of the resin layer is adjusted such that (for a certain wavelength) half of the light incident through one "port" (i.e., face of the cube) is reflected and th



What are Beamsplitters?

Optical components that create two beams by splitting incident light are beamsplitters. Read more about the different types of beamsplitters at Edmund

How Does A Fiber Optic Splitter Work

They work by using a fused tapered fiber



structure to split the signal into multiple outputs, achieving a high level of precision and control. With their low signal attenuation and loss, scalability,

Product Catalog



Beam Splitter

These beam-splitting metasurfaces can be used in terahertz optical communications to increase the working rate and the capacity of the channel in wireless communication.

What are Beamsplitters?

Beamsplitters are generally effective at reflecting s-polarization but they are not as effective at preventing p-polarization from reflecting. This occurs because when s



Contact Us

For datasheets, pricing, or custom telecom energy solutions, please visit: <https://www.koskolong.co.za>