



Adam Tas Corridor Energy

Wiring Techniques for Explosion- Proof Lighting Distribution Boxes





Wiring Techniques for Explosion-Proof Lighting Distribution Boxes



Wiring methods for explosion-proof light fixtures

Wiring methods for explosion-proof light fixtures are a common question from users. According to the IEC 60079 explosion-proof safety standards, live electrical contacts must not be

BXM (D)8050 Explosion proof Distribution Boxes

Warom Explosion proof Distribution Boxes. Modular GRP construction fitted with a variety of optional components..



Special requirements for cable laying and distribution box installation

Working in potentially explosive environments means every component of your electrical system becomes a potential spark that could ignite disaster. It's not just about compliance - it's about



BXM (D)53 Explosion proof Distribution Boxes

Warom BXM(D)53 Explosion proof Distribution



Boxes for Lighting or Power Distribution. Modular construction with optional components.

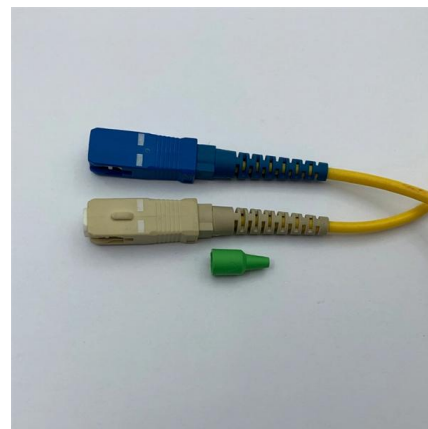


Installation guide for hazardous areas

All circuit wiring is run in conduit and junction boxes approved for explosion-proof installation. Explosion proof transducers and wiring must be installed according to ANSI/UL 1203-1994, Explosion-Proof

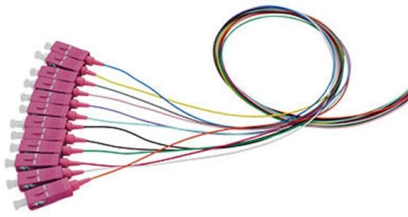
Installation and Wiring of High and Low Voltage Explosion-Proof

Explosion-proof distribution boxes, vital terminal distribution equipment in power systems, play a crucial role in controlling and protecting industrial electricity in hazardous environments. Given



How To Wire Explosion-Proof Lights , Installation Method

When setting up explosion-proof lighting systems, following stringent wiring guidelines is crucial for ensuring safety and adherence to standards.



Ex junction and terminal boxes - Explosion-Proof , mlx-ex

GRP Ex terminal boxes What are Ex Terminal Boxes? Ex terminal boxes are protective enclosures used to connect and distribute electrical circuits safely within explosive atmospheres. They serve as



Requirements And Specifications For Installation Of

A leakage protector should be installed in the distribution box to provide additional safety protection. Installation requirements in special

GAIN AN IN - DEPTH UNDERSTANDING OF

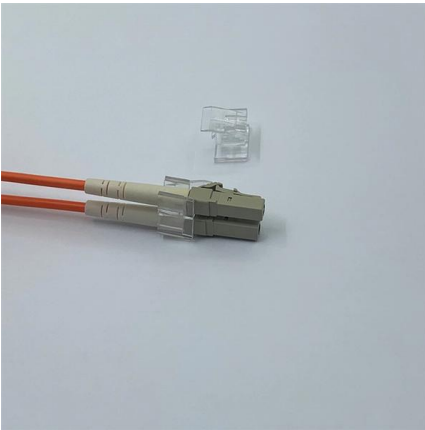


- ① LED DISPLAY PANEL
- ② PROTECTOR OPERATION BUTTONS
- ③ NEUTRAL WIRE OUTPUT TERMINAL
- ④ LIVE WIRE OUTPUT TERMINAL
- ⑤ WORKING CURRENT AND VOLTAGE INSTRUCTIONS
- ⑥ FLAME - RETARDANT SHELL

How to Properly Install Explosion-Proof Lighting

Learn the essential steps and best practices for properly installing explosion-proof lighting fixtures to ensure safety and compliance in hazardous





Explosion-Proof Lighting Wiring Methods: Cable vs Steel Conduit

Learn two common explosion-proof lighting wiring methods for hazardous areas: cable wiring and steel conduit installation. Includes diagrams and practical applications for industrial

Wiring Specifications for Explosion-Proof Distribution Boxes

Wire Protection: Wires should not be exposed to the air directly. For example, when connecting an explosion-proof pressurized enclosure to an audio



Wiring Specifications for Explosion-Proof Distribution Boxes

6. Grounding of Metal Cabinets: Metal explosion-proof distribution boxes must be reliably grounded, with the grounding wire connected to the

Explosion Proof Enclosure Comprehensive Guide

Explosion-Proof Distribution box: These smaller components are structurally similar to distribution cabinets. You can use these for the distribution



Expert Guide: Select the Right Temporary Power Distribution Box

Expert Guide: Select the Right Temporary Power Distribution Box Workplace injuries from slips, trips, and falls make up 27% of all incidents, and messy wiring is often the culprit. Temporary power



Explosion protective components & systems , Products , ABB

From its global facilities ABB manufactures a wide range of ATEX, IECEx, UL, CSA approved electrical products for hazardous area applications. These include cable glands and lighting ranges.



Requirements And Specifications For Installation Of

The installation requirements and specifications of Distribution box involve many aspects, including site selection, fixing method, wiring specifications





Wiring Methods for Explosion-Proof Junction Boxes

In the critical task of wiring explosion-proof junction boxes, adhering to stringent safety measures is paramount. Here's a simplified guide: 1.



Explosion proof distribution box standards and installation issues

Switch terminals should be matched with the wire cross-section; wiring after component installation should be neatly arranged and tied into a bundle with nylon tape to be fastened behind the board.



How to Install Explosion-Proof Distribution Box

3. Regularly inspect the explosion-proof distribution box for any damage to components. The installation inclination of the distribution box should



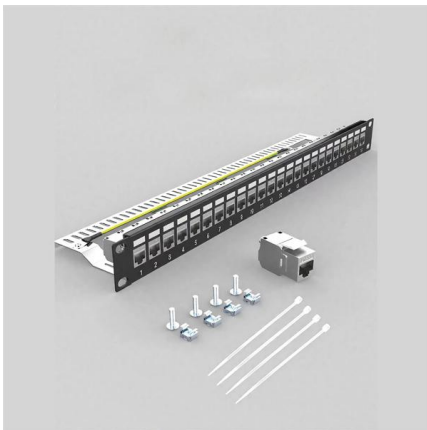
Explosion Proof Illumination Distribution Boxes (With

Flameproof and explosion proof, these power overhaul distribution boxes are suitable for use in hazardous areas. Specs: Ex mark: Ex de IIC T4 Gb DIP A21 TA,T4



Special requirements for cable laying and distribution box installation

Creating truly explosion-proof installations requires: The companies that get this right don't just comply with standards - they develop institutional expertise that permeates every design



Explosion-Proof Equipment: What to Use to Determine

In my columns on hazardous locations, I didn't get around to equipment.& nbsp;For many years, Class I and Division 1 classification meant the design was going to

Ultimate Guide to Explosion Proof Wiring Box Solutions

Conclusion In summary, explosion proof wiring box solutions are vital for ensuring safety in environments prone to explosive hazards. The ongoing innovations in materials and technology,





Contact Us

For datasheets, pricing, or custom telecom energy solutions, please visit:
<https://www.koskolong.co.za>