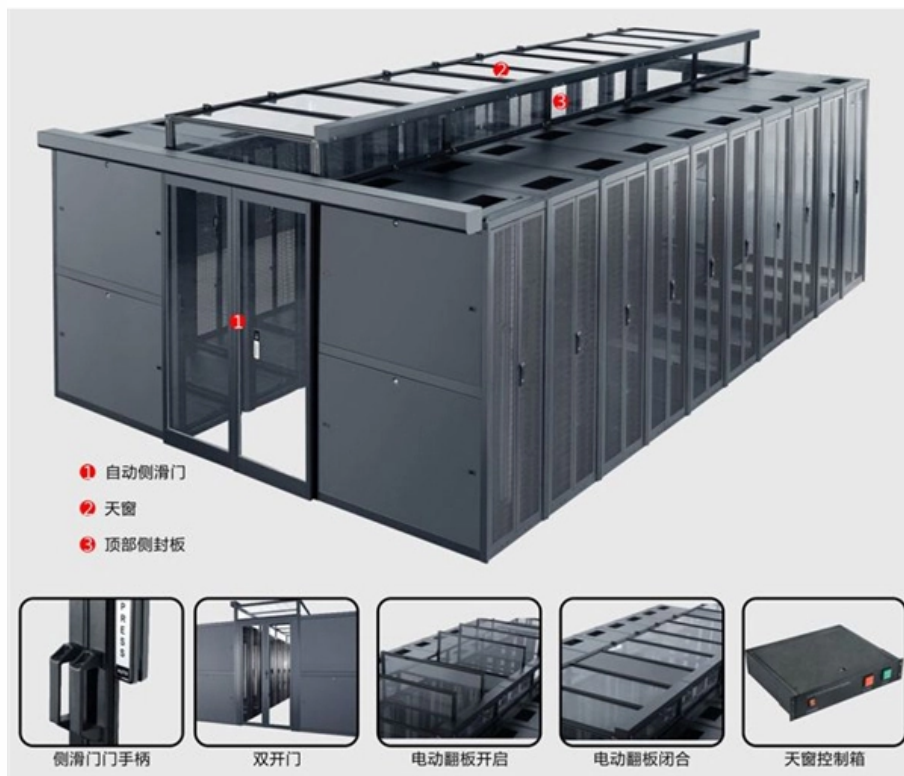




# Wiring of busbar distribution box





## Wiring of busbar distribution box

---

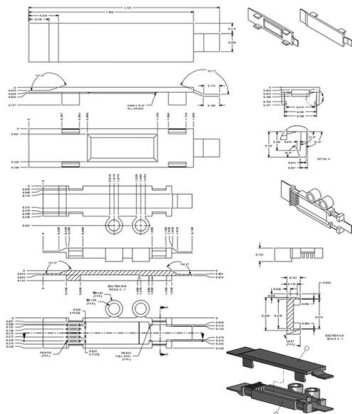


### 3 Phase Panel Board Connection Internal Busbar , Distribution Board

Why is busbar needed? Why is it called a bus bar? How do you balance a 3-phase distribution board? What is a 3-phase distribution board? What is 3-phase 4 wire distribution system?

### Bus Bar : Different Types, Advantages & Disadvantages

An additional type is used in large substations to avoid interruption in the power distribution. The different types are explained below. Single Bus-Bar Arrangement



### Busbar 101

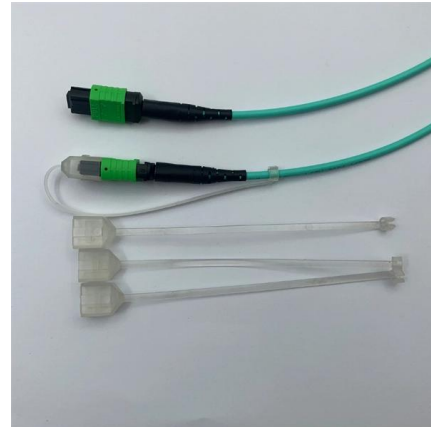
Busbar power distribution removes both the bulky PDUs and the line-side wiring and cable management necessary to electrify enclosures. What's more, busbar power panels can more easily accommodate

### Coordination and protection of busbar distribution

1.6. Summarizing busbar distribution characteristics The performance criteria of a distributed electrical distribution installation in



industrial and commercial buildings call for functions whose characteristics



### **A Step-by-Step Guide to Wiring an Electrical Panel Box**

Find out how to properly wire an electrical panel box with a comprehensive diagram and step-by-step instructions.

### **How Do MCCB Pan Assemblies and Busbars Work Together in Distribution Boxes?**

Power distribution failures cause devastating consequences in critical facilities--production halts, data loss, and



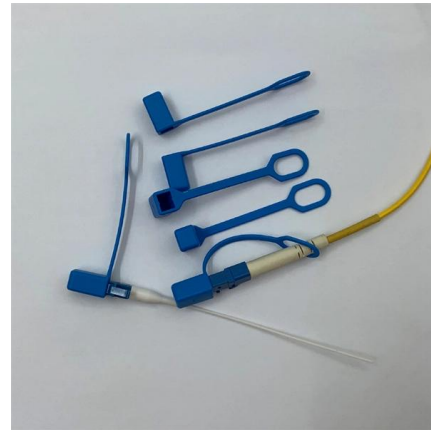
### **Step-by-Step Busbar Installation Guide , Artizono**

Traditional Panel Wiring Systems Traditional panel wiring systems use power distribution blocks (PDBs) and many individual wires to distribute power.



## Electrical Bus Bar Connections - A Detailed Overview

Learn about electrical bus bar connections, their importance in efficient power distribution, and their role in 3 phase busbar panels and busbar boxes.



## 200 Amp 3 Phase electrical Busbar Distribute Box full

200 Amp 3 Phase electrical Busbar Distribute Box full termination and fitting connection wiring.

## What is a Busbar? A Detailed Guide

A busbar is a metallic strip or bar used in electrical power distribution, installed inside switchgear, circuit boards, and busway boxes to directly distribute



## Design and installation of low voltage busbar trunking

Three typical applications would be: Supply to large numbers of light fittings Power distribution around factories and offices Rising main in office blocks



## How to Wire a Busbar for Safe Power Distribution

Master the critical steps--from tool selection and safety checks to proper crimping and torque--for wiring any electrical busbar safely.

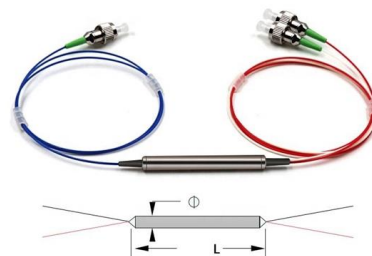


## Electrical wiring and busbar arrangement of distribution box

The distribution box is a low-voltage distribution box composed of switchgear, measuring instruments, protective appliances and auxiliary equipment assembled

## 12 Busbars and distribut

the circulation of high currents in busbars leads to the induction of magnetic fields in the surrounding exposed metal conductive parts (enclosure panels, frames and chassis, etc.).



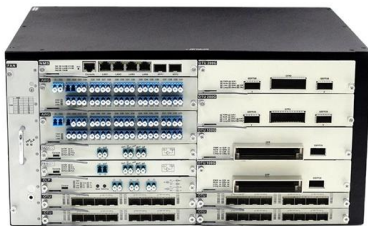


## How to Wire a Busbar for Safe Power Distribution

A busbar is a common electrical junction point used to consolidate multiple wires, acting as a central hub for power distribution. In DC systems, such as those found in RVs, boats, or solar power setups,

## Bus Bar Box Basic Explanation: Function, Structure and

Efficient power distribution is the heart of any electric power system. But developing a method that takes into account the safety, electricity current



## An In-Depth Look at Busbars: Understanding the Electrical

Busbars typically have a rigid conductor connecting power transformers, switchgear, generators, and other electrical equipment.

## What Is A Busbar - Power Distribution In Electrical

A busbar is a rigid conductor, typically made of copper or aluminum, that serves as a common connection point for multiple circuits within electrical enclosures. It



### **Electrical wiring and busbar arrangement of distribution box**

The bus is divided into main busbar and distribution bus. The main bus is arranged at the back of the switch box (busbar compartment), which can be divided into two layers.



### **Busbar Basics: Understanding the Fundamentals of Electrical**

Conclusion: Understanding the basics of busbars is vital for ensuring safe and efficient electrical power distribution. By grasping the core principles of busbar design, material selection, and maintenance,



### **A Guide to Electrical Busbars: Common Uses & Design**

Engineers choose busbars for many reasons, usually due to cost, performance, and safety. In most cases, the following characteristics drive the choice of busbars





## Step-by-Step Busbar Installation Guide , Artizono

Busbars are the unsung heroes of electrical panels, ensuring reliable power distribution and minimizing clutter. If you've ever wondered how to achieve



## Busbar, Bus Stab, Breaker Slot and Circuit Space in a

What are Busbars, Bus Stabs, Circuit Spaces, Breaker Slots, Neutral Terminals, and Ground Terminals in an Electrical Panel or Load Center?  
Electric panels and load

## Bus Bar Box Basic Explanation: Function, Structure and

Bus Bars Boxes enable the management of wires carrying high currents in the simplest way possible, removing the need for multiple wires to be



## Busbars 101: A Comprehensive Guide

Find out how busbars function as conductive bars to distribute electricity within electrical systems and ensure stable power flow.



## A Guide to Electrical Busbars: Common Uses & Design

Get answers for advantages and common uses for electric busbars, types of busbars, and how simulation tools complement the design process.



## How to Install Bus Bars in Electrical Panels: A Step-by-Step Guide

Bus bars play a crucial role in electrical distribution systems by providing a reliable and efficient way to conduct electricity within electrical panels. Whether in industrial, commercial, or residential

## Understanding Circuit Breaker Wiring Configurations in

Master the safest and most efficient circuit breaker wiring configurations. Learn about single-phase vs. three-phase setups, safety standards, and future-proof electrical





## Busbar Circuit Diagram



busbar circuit diagram As technology advances and becomes more complex, so do the systems and circuits that power our daily lives. One such crucial component is the busbar circuit, a

## Contact Us

---

For datasheets, pricing, or custom telecom energy solutions, please visit:  
<https://www.koskolong.co.za>