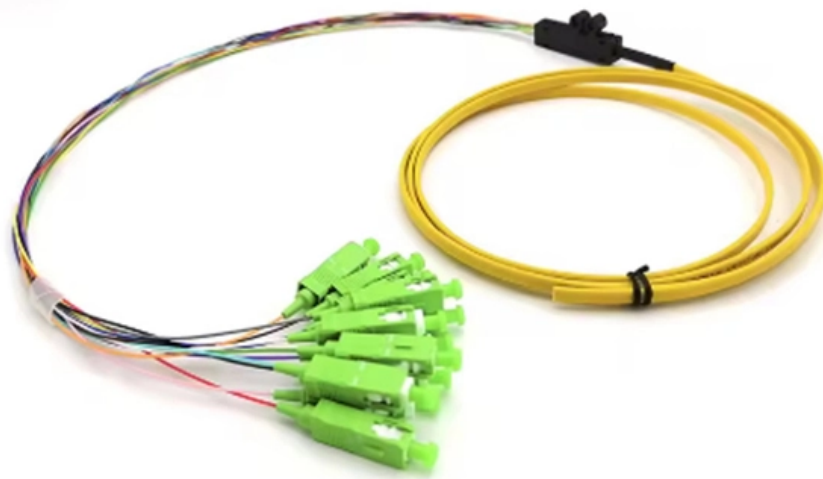




**Adam Tas Corridor Energy**

# **Wiring principles for incoming lines to distribution boxes**





## Overview

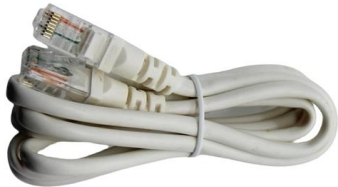
---

1) Generally, the incoming line of power distribution box adopts five wire system, that is, a, B and C three-way phase line (the general color is yellow, green and red), one way zero line (the color is light blue) and one way ground line (the color is yellow with green). We'll walk through everything you need to consider, from choosing the right wiring approach to avoiding those costly installation mistakes that so many people make. Correct wiring methods for circuit breakers within distribution boxes are fundamental to ensuring electrical safety and compliance with established codes. It includes isolator, RCCB (Residual current circuit breaker) or RCD (Residual-current device) devices, protective fuses or MCB's (Miniature Circuit Breaker).



## Wiring principles for incoming lines to distribution boxes

---



### Home Electrical Wiring Basics: Components, Types, and

Learn the basics of home electrical wiring including wire types, gauges, safety practices, and key components used in residential electrical systems.

### How to wire a DB - Distribution Board Wiring -

The cable or wire size, the rating of breakers, fuse, etc depends on the type of wiring, purpose, and rating of loads. It should be properly selected as per



### NY101 Laws, Rules, & Ethics for Professional Engineers

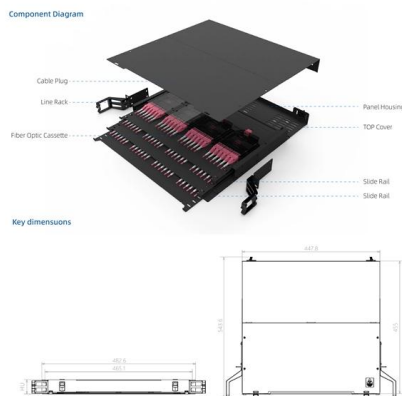
Circuits originating from within the facility that extend beyond the facility envelope. Wiring and connections for supplemental grounding systems. Wiring from and connections to non-utility

### The Ultimate Guide to Circuit Breaker Wiring

Master the safest and most efficient circuit breaker wiring configurations. Learn about single-



phase vs. three-phase setups, safety standards, and future-proof electrical



## Single Phase Distribution Box Wiring Diagram for

Wiring Accessories for Single Phase Distribution Board Main Distribution Board or Fuse Boards (Consumer Unit) usually contains on the following three main units

## The Complete Guide to Distribution Box: Installation, Types & More

What's the difference between a distribution box and a sub-panel? A distribution box typically refers to the main electrical panel that receives power from the utility service. A sub-panel is



## A step-by-step guide to wiring your breaker box

Learn how to read and understand wiring diagrams for breaker boxes to ensure proper electrical configurations and safety measures.



## Understanding Distribution Boxes: A Comprehensive Guide

A distribution box, also known as a power distribution box or electrical distribution box, is used to distribute electrical power safely to multiple



### The installation requirements for the distribution box

Learn how to install a distribution box safely and correctly. Covers wiring, placement, standards, and expert tips for a compliant setup.

## Understanding Circuit Breaker Wiring Configurations in

Correct wiring methods for circuit breakers within distribution boxes are fundamental to ensuring electrical safety and compliance with established codes.



### Step-by-Step Guide to Wiring a 3 Phase DB Box

Learn about the wiring process for a 3 phase distribution board (DB) box, including the necessary steps and safety precautions. Understand how to connect the



## The installation requirements for the distribution box

Learn how to install a distribution box safely and correctly. Covers wiring, placement, standards, and expert tips for a compliant setup. A distribution



## Low-voltage distribution networks

In cities and large towns, standardized LV distribution cables form a network through link boxes. Some links are removed, so that each (fused) distributor leaving a substation forms a

## How to determine the size, installation method and

1) Generally, the incoming line of power distribution box adopts five wire system, that is, a, B and C three-way phase line (the general color is yellow, green and red),





## Selection and installation considerations for the incoming line method

Just like you wouldn't want a weak or clogged artery in your body, you don't want subpar incoming lines feeding your distribution box. We'll walk through everything you need to consider,

## Distribution Box Wiring Steps

?Wiring Direction?: Wiring between the main circuit breaker and each branch circuit breaker in the box generally goes on the left, and the wiring out of



## Basics of power system design

In order to design the best distribution system, the system design engineer must have information concerning the loads and a knowledge of the types of distribution systems that are applicable. The

## Electric power distribution

Electric power distribution A 50 kVA pole-mounted distribution transformer Electric power distribution is the final stage in the delivery of electricity. Electricity is



## Power Distribution Boxes Explained Simply

Bus bars and internal wiring help distribute electricity to each connected circuit efficiently. The box keeps everything safe by balancing the load,

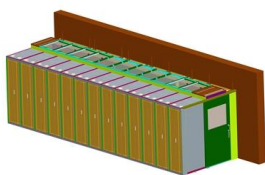
### Wiring principle of distribution box

Finally, insert the conductor part of the conductor into the wiring position and press it tightly, but do not press it to the insulation skin and do not expose the conductor;



### IEEE 525-2007\_accepted

IEEE-SA Standards Board Abstract: The design, installation, and protection of wire and cable systems in substations are covered in this guide, with the objective of minimizing cable failures and their





## How to Wire a Home Distribution Box

The above mentioned electrical wiring accessories and protective devices are used to control and distribute electric supply (safely to connected



## The Ultimate Guide to Circuit Breaker Wiring

Do you worry about faulty wiring causing a fire in your home? Messy distribution boxes are dangerous and very hard to fix. This guide shows you how to organize

## Wiring of the Distribution Board From Energy Meter to

How to Wire a Distribution Board? Distribution Board aslo know as "Panel Board", "Switch & Fuse Board" or "Consumer Unit" is a box installed in the building



## Contact Us

---

For datasheets, pricing, or custom telecom energy solutions, please visit:  
<https://www.koskolong.co.za>